

A man wearing safety glasses and a white t-shirt is using a ROKAMAT orbital sander on a wall. The sander has a large black disc and a red handle. The background is a plain, light-colored wall.

ROKAMAT

easy working

RANGE OF MACHINES 2016

SPECIAL SOLUTIONS FOR CONSTRUCTION



easy working

For more than 30 years ROKAMAT has been producing high-quality machinery for construction and industry.

Motivated by own experiences in his parents' building firm, company founder Rolf Kammerer started in 1982 developing special machines to make work on construction sites easier.

True to the slogan "easy working" ROKAMAT products impress with their lightweight tools. The motor is worn comfortably on a belt – for those, who want to be kind to their back.

Find yourself convinced by our unique products: successful on building sites throughout the world because of best durability, high efficiency and easy handling.

ROKAMAT – a strong brand, made in Germany





Product overview

ROKAMAT Wireless Line

Wireless SPONGE FLOAT **NEW!** Page 4-5

Wireless Grinding System for EIFS and ETICS: FOX and Vacuum Cleaner **NEW!** Page 6-7

Grinding Machines

CHAMELEON Universal Machine Page 8-11

TITANO Long-neck Grinder Page 12-15

GECKO Drywall Grinder Page 16-19

GECKO RAPID Turbo Grinder Page 20-23

GEX Renovation Grinder Page 24-27

Formwork Cleaner

HEDGEHOG Clean Page 28-29

Joint Millers

PIRANHA Cutter Page 30-31

PIRANHA Miller Page 32-33

Vacuum Cleaners

TAPIR M35 Special Vacuum Cleaner (class M) Page 34

Rucksack Vacuum Cleaner Page 35

Plaster Finishing Machines

DRY Page 36-37

WET Page 38-39

NAUTILO Page 40-41

Accessory Plaster Finishing Machines Page 42-43

Concrete Power Trowel

SKATE **NEW!** Page 44-45

Concrete Vibrator

Page 46-47

Market Premiere

ROKAMAT WIRELESS SPONGE FLOAT

No. 35000



- ◆ **Machining plaster and lime-cement render**
- ◆ **Sponging filler compounds - saving the grinding process**
- ◆ **Perfect for working on scaffolding**



**„We save 50-70 %
working time.“**
Tihamer Vendeg, Plasterer

Advantages:

- Pure freedom of movement - no cumbersome cable
- Designed with powerful rechargeable battery
- Optimal handling - efficient machining with 50 % time savings
- Even texture due to large operating surface



Relaxed machining
on large wall surfaces

Technical Data

| | |
|-------------------------|----------|
| Tool r.p.m. | 230 |
| Voltage Li-Ion battery | 18 V |
| Capacity Li-Ion battery | 5,2 Ah |
| Weight | ca. 4 kg |



Scope of supply:

2 battery packs, battery charger,
supporting plate (Velcro System)
Ø 350 mm, sponge 49300, in machine case

Market Premiere



ROKAMAT FOX

Wireless Grinder for EIFS and ETICS

No. 24000



- ◆ **Grinding EIFS and ETICS insulations boards**
- ◆ **Optimal for working on scaffolding**
- ◆ **Designed for dust exhausting**

Advantages:

- Pure freedom of movement - no cumbersome cable
- Designed with powerful rechargeable battery
- Smooth operation thanks to contra-rotating tool discs
- **Grinding System:**
in combination with the Wireless Rucksack Vacuum Cleaner



Wireless Rucksack Vacuum Cleaner

No. 12000

See page 35

Accessory discs, Ø 200 mm

Grinding

Supporting plates with Velcro (in pairs Ø 200 mm each) No. 24002

For mounting sanding discs and metal abrasives discs

Sanding discs

Emery grain 16, 4 pcs. (for polystyrene) No. 20816

Emery grain 24, 4 pcs. No. 20824

Emery grain 40, 6 pcs. No. 20840

Further grains on request

Range of application:

1. Surface grinding of polystyrene insulating boards, rock wool or other thermal insulating systems (EIFS and ETICS) as well as taped board joints
2. Roughening up polystyrene surfaces for next application

For aggressive grinding

Metal abrasive discs, fine (in pairs Ø 200 mm each) No. 22400

On uneven polystyrene insulation plates

Spare battery + battery charger

Battery pack 5,2 Ah 18 V No. 08050

Battery charger standard No. 08060

Quick battery charger No. 08065

Premium package battery: Quick battery charger + battery pack No. 08066

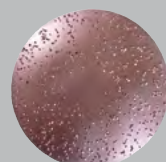
Technical Data

| | |
|-------------------------|------------|
| Tool r.p.m. | 400 |
| Voltage Li-Ion battery | 18 V |
| Capacity Li-Ion battery | 5,2 Ah |
| Weight | ca. 2,2 kg |



Scope of supply:

2 battery packs, battery charger, supporting plates with Velcro Ø 200 mm and emery discs grain 16, in machine case





ROKAMAT CHAMELEON

Light weight Universal Machine

No. 20000



- ◆ Ample accessories for a wide range of applications
- ◆ Grinding, smoothing, cleaning, polishing, stripping wallpaper – all with one machine



Removing old plasters

Advantages:

- Light weight due to separation of tool and motor
- Smooth operation thanks to contra-rotating tool discs
- Evenness thanks to large operating surface
- Continuous speed control to optimise each different application
- Dust-free working with the Rucksack Vacuum Cleaner, for freedom of movement
- Also compatible with the ROKAMAT TAPIR M35



Stripping wallpaper

Technical Data

| | |
|--------------|---------------------------------------|
| Tool r.p.m. | 150 – 570 |
| Motor output | 1.000 W |
| Weight | Tool: ca. 2,4 kg Motor: ca. 2,4 kg |



Scope of supply:

Supporting plate Ø 200 mm,
Emery grain 16 (4 pcs.),
in machine case

CHAMELEON Accessories

Accessory discs in pairs Ø 200 mm each

Cleaning

| | |
|-------------------------------|-----------|
| Steel brushes, fine | No. 21200 |
| Steel brushes, medium | No. 21300 |
| Steel brushes, coarse | No. 21400 |
| Special steel brushes, medium | No. 23000 |
| Special steel brushes, coarse | No. 23100 |
| Nylon brushes, superfine | No. 21505 |
| Nylon brushes, fine | No. 21500 |
| Nylon brushes, coarse | No. 21600 |
| Steel / nylon brushes | No. 22500 |

Cleaning formwork units: Concrete residues on a pan or on steel frames can be easily removed with steel brushes. Once the surface skin is waxed with nylon brushes, it is ready for further use. Thanks to the low weight of Chameleon, pans can be cleaned in-situ.

Further uses:

1. Removing old, loose plaster, render and paint
2. Cleaning exterior facades of moss and algae
3. Cleaning and preparing plaster for new coverings

Cleaning and Polishing

(All Pads to use with the supporting plates No. 20700)

| | |
|-------------------------------|-----------|
| Cleaning Pad grid 80, coarse | No. 23500 |
| Cleaning Pad grid 120, medium | No. 23400 |
| Cleaning Pad grid 180, fine | No. 23900 |
| Polishing Pad, very fine | No. 23300 |
| Lambskin Pad, superfine | No. 23600 |

Cleaning buildings and facades, Polishing „marble effect“ or parquet.

Scraping

| | |
|------------------------|-----------|
| Nail plates „longlife“ | No. 20100 |
|------------------------|-----------|

Nail plates with pointed pins for scraping sgraffito. Large working surface ensures both safe and flat working with the nailplates. They can also be used to remove glass fibre wallpaper coatings.

| | |
|-------------|-----------|
| Widia discs | No. 21700 |
|-------------|-----------|

For removing sanding old plasters and for roughening dry plaster. Adhesive residues of carpet glue and tiling adhesives can be milled off, as well as heavy fouling on industrial floors (area performance for tiling adhesive: about 20 - 30 square metres per hour).

Smoothing

| | |
|------------------------|-----------|
| Smoothing attachments | No. 25200 |
| to use with base plate | No. 25000 |

Smoothing plates for abrading render and plaster after setting.

Flattening concrete

| | |
|------------------|-----------|
| Flattening plate | No. 22700 |
|------------------|-----------|

For flattening concrete easily and quickly with the plastic flattening discs. These are to be used before the material has taken final set (sprayed concrete).

| | |
|--------------------------------------|-----------|
| Flattening plates with trowel blades | No. 22600 |
|--------------------------------------|-----------|

For hard trowelling (e. g. wet concrete inside silos).

CHAMELEON Accessories

Accessory discs in pairs Ø 200 mm each

Removing wallpaper

| | |
|-------------------|-----------|
| Perforating discs | No. 22200 |
|-------------------|-----------|

Perforating wallpaper, so that it can be thoroughly soaked and loosens easily.

| | |
|----------------|-----------|
| Shaving plates | No. 22300 |
|----------------|-----------|

For removing wallpaper, for cleaning shuttering or for other shaving work.

| | |
|-------------|-----------|
| Guide rails | No. 22210 |
|-------------|-----------|

Please use in combination with perforating and shaving discs.

Accessory discs, Ø 200 mm each

Grinding

| | |
|-------------------------------|-----------|
| Supporting plates with velcro | No. 20700 |
|-------------------------------|-----------|

For mounting sanding discs, grinding grids, metal abrasive discs, cleaning and polishing pads.

Sanding discs

| | |
|--|-----------|
| Emery grit 16, 4 pcs. (f. polystyrene) | No. 20816 |
|--|-----------|

| | |
|-----------------------|-----------|
| Emery grit 24, 4 pcs. | No. 20824 |
|-----------------------|-----------|

| | |
|-----------------------|-----------|
| Emery grit 40, 6 pcs. | No. 20840 |
|-----------------------|-----------|

| | |
|-----------------------------------|-----------|
| Emery grit 60, 6 pcs. (f. gypsum) | No. 20860 |
|-----------------------------------|-----------|

| | |
|----------------------|-----------|
| Emery grit 80, 6 pcs | No. 20880 |
|----------------------|-----------|

| | |
|-----------------------|-----------|
| Emery grit 100, 6 pcs | No. 20810 |
|-----------------------|-----------|

| | |
|-----------------------|-----------|
| Emery grit 120, 6 pcs | No. 20812 |
|-----------------------|-----------|

Range of application:

1. Surface grinding: Polystyrene insulating boards, rock wool or other thermal insulating systems (EIFS and ETICS), taped board joints, plaster background (1st layer of the render)
2. Roughening up polystyrene surfaces for next application
3. Cleaning shuttering pans (when concrete residues are hardened)

JÖST Superpads

Patented Superpads „use it“ in packs of 6

| | | | |
|----------|-----------|----------|-----------|
| Grain 40 | No. 28040 | Grain 60 | No. 28060 |
|----------|-----------|----------|-----------|

| | | | |
|----------|-----------|-----------|-----------|
| Grain 80 | No. 28080 | Grain 120 | No. 28012 |
|----------|-----------|-----------|-----------|

| | | | |
|-----------|-----------|-----------|-----------|
| Grain 180 | No. 28018 | Grain 220 | No. 28022 |
|-----------|-----------|-----------|-----------|

Unique full-surface perforations and patented Velcro-type system allows full-surface dust extraction (no clogging), higher sanding capacity and shorter sanding time.

Grinding grids

| | |
|--------------------------|-----------|
| Grinding grit 80, 4 pcs. | No. 27080 |
|--------------------------|-----------|

| | |
|---------------------------|-----------|
| Grinding grit 100, 6 pcs. | No. 27010 |
|---------------------------|-----------|

| | |
|---------------------------|-----------|
| Grinding grit 120, 6 pcs. | No. 27012 |
|---------------------------|-----------|

| | |
|---------------------------|-----------|
| Grinding grit 180, 6 pcs. | No. 27018 |
|---------------------------|-----------|

| | |
|---------------------------|-----------|
| Grinding grit 220, 6 pcs. | No. 27022 |
|---------------------------|-----------|

For plaster, filler, etc.

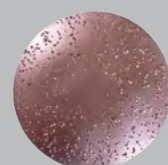
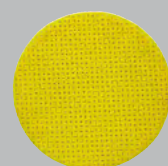
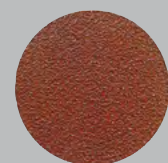
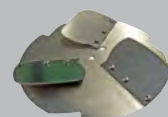
For aggressive grinding

| | |
|----------------------------|-----------|
| Metal abrasive discs, fine | No. 22400 |
|----------------------------|-----------|

| | |
|------------------------------|-----------|
| Metal abrasive discs, medium | No. 23200 |
|------------------------------|-----------|

| | |
|------------------------------|-----------|
| Metal abrasive discs, coarse | No. 22900 |
|------------------------------|-----------|

For grinding timber, brick, screed, carpet remains, fibreglass, gas concrete and many other materials.

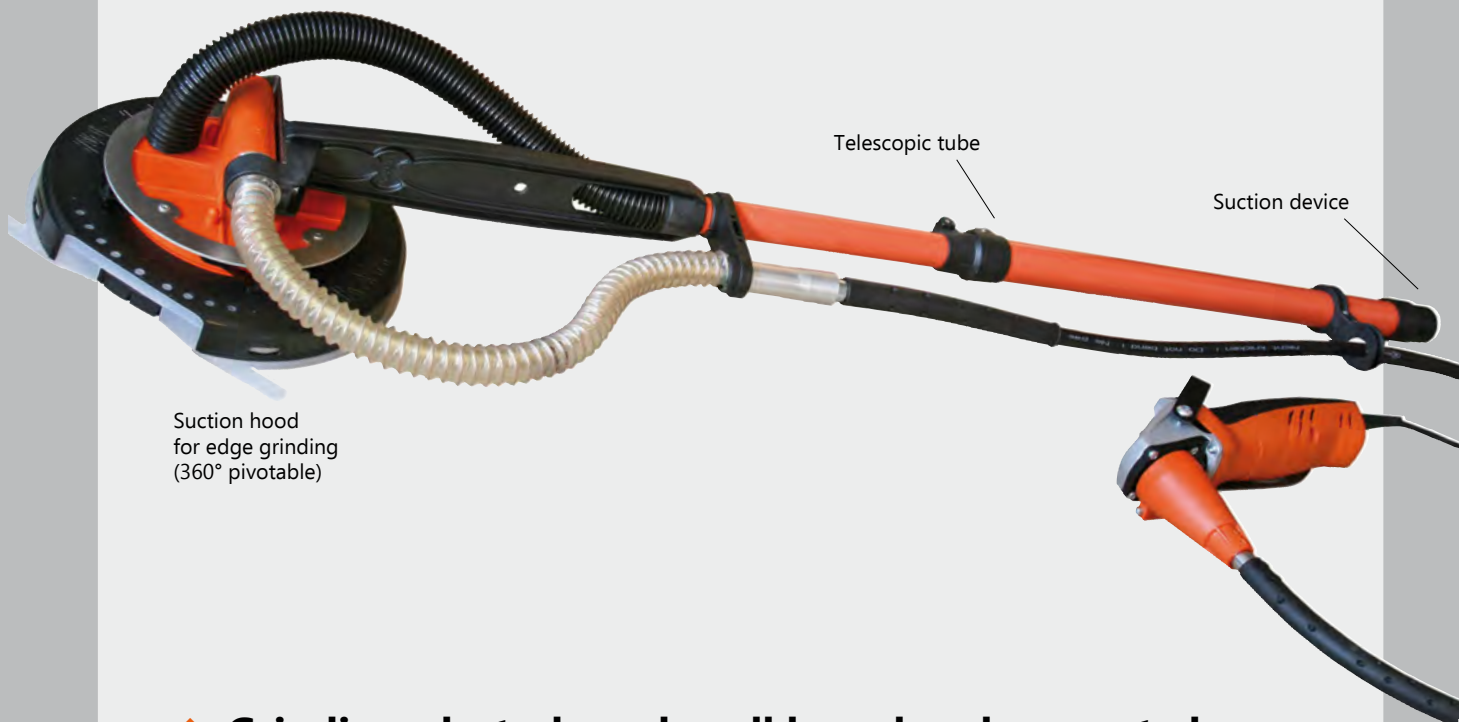




ROKAMAT TITANO

Long-neck Grinder

No. 60000



- ◆ Grinding plasterboard, wall board and concrete burrs
- ◆ Grinding and polishing walls, floors and ceilings



Edge grinding

Advantages:

- Light weight: tool ca. 2,4 kg (tool / drive separation)
- High engine power
- Short and long-neck grinder in one (grinding up to 3 m height)
- Flexible grinding head with heavy-duty bearing (swivelling 180 °)
- Grinding tight into the edges with special dust hood
- Antistatic motor cover
- Compatible with ROKAMAT TAPIR M35 and Rucksack Vacuum Cleaner



Perfect for working
above head

Technical Data

| | |
|--------------|------------------|
| Tool r.p.m. | 490 - 1.730 |
| Motor output | 1.500 W |
| Weight | Tool: ca. 2,4 kg |
| Length | 105 - 155 cm |



Scope of supply:

Supporting plate Ø 230 mm, sanding and Jöst-Set, in machine case

TITANO Accessories

Supporting plate with velcro, Ø 230 mm

with foam rubber base

For mounting sanding discs, metal abrasive discs, cleaning and polishing pads No. 61000

Cleaning and Polishing

Cleaning pad grain 80, coarse, 6 pcs. No. 62200

Cleaning pad grain 120, medium, 6 pcs. No. 62000

Cleaning pad grain 180, fine, 6 pcs. No. 62100

Polishing pad, very fine (2 pcs.) No. 62800

Lambskin pad, superfine (2 pcs.) No. 62900

Cleaning and polishing fair-faced concrete.

Grinding

Sanding discs in packs of 6

Emery grain 40 No. 61100

Emery grain 80 No. 61300

Emery grain 120 No. 61500

Emery grain 60 No. 61200

Emery grain 100 No. 61400

Emery grain 150 No. 61600

Sanding discs for professional painting and varnishing.

JÖST Superpads

Patented Superpads „use it“ in packs of 6

Grain 40 No. 69840

Grain 80 No. 69880

Grain 180 No. 69818

Grain 60 No. 69860

Grain 120 No. 69812

Grain 220 No. 69822

Unique full-surface perforations and patented Velcro-type system allows:
full-surface dust extraction (no clogging), higher sanding capacity and shorter sanding time.**Grinding Grids**

Grinding grid 80, 4 pcs No. 69780

Grinding grid 100, 6 pcs. No. 69710

Grinding grid 120, 6 pcs. No. 69712

Grinding grid 180, 6 pcs. No. 69718

Grinding grid 220, 6 pcs. No. 69722

For plaster, filler, etc.

For aggressive grinding

Metal abrasive disc, fine No. 60500

Metal abrasive disc, medium No. 60600


Metal abrasive disc, coarse No. 60700

For grinding timber, brick, screed, carpet remains, fibreglass, gas concrete and many other materials.

Diamond grinding disc „light“

No. 60300

For grinding concrete burrs, floor screeds, etc.



For more than 30 years ROKAMAT
has been inventing special machinery for
painters and plasterers - always striving
to make working easier and
profitability higher.

*„There is nothing comparable to
buy anywhere.
With ROKAMAT, everything fits!*

Michel Legier, shopfitting



ROKAMAT GECKO

Drywall Sander

No. 80000



- ◆ Agile Drywall Sander for walls and ceilings
- ◆ Special grinding head (head adjustable)



Edge grinding

Advantages:

- Light weight (tool / drive separation)
- Short and long-neck grinder in one
- Powerful grinding action with minimum effort (due to vacuum exhaust and perfect balance)
- Special grinding head (sleuable in each direction, angle adjustable, designed for edge grinding)
- Easy slide-ring for perfectly smooth run
- Compatible with Rucksack Vacuum Cleaner or ROKAMAT TAPIR M 35



Perfect for grinding above head

Technical Data

| | |
|--------------|------------------|
| Tool r.p.m. | 415 – 1.470 |
| Motor output | 1.500 W |
| Weight | tool: ca. 3,7 kg |
| Length | 110 cm – 160 cm |



Scope of supply:

Supporting plate Ø 230 mm, sanding and Jöst-Set, in machine case

GECKO Accessories

Special supporting plate with Velcro, Ø 230 mm

with foam rubber base
for all accessory discs Ø 230 mm

No. 61000

Cleaning and Polishing

| | |
|---|-----------|
| Cleaning pad grain 80, coarse (6 pcs.) | No. 62200 |
| Cleaning pad grain 120, medium (6 pcs.) | No. 62000 |
| Cleaning pad grain 180, fine (6 pcs.) | No. 62100 |
| Polishing pad, very fine (2 pcs.) | No. 62800 |
| Lambskin pad, superfine (2 pcs.) | No. 62900 |

Cleaning and polishing fair-faced concrete.

Sanding

Emery discs in packs of 6

| | | | |
|-----------|-----------|-----------|-----------|
| Grain 40 | No. 61100 | Grain 60 | No. 61200 |
| Grain 80 | No. 61300 | Grain 100 | No. 61400 |
| Grain 120 | No. 61500 | Grain 150 | No. 61600 |

Sanding discs for professional painting and varnishing and for universal use.

JÖST Superpads

Patented Superpads „use it“ in packs of 6

| | | | |
|-----------|-----------|-----------|-----------|
| Grain 40 | No. 69840 | Grain 60 | No. 69860 |
| Grain 80 | No. 69880 | Grain 120 | No. 69812 |
| Grain 180 | No. 69818 | Grain 220 | No. 69822 |

Unique full-surface perforations and patented Velcro-type system allows:
full-surface dust extraction (no clogging), higher sanding capacity and shorter sanding time.

Grinding Grids

| | |
|--------------------|-----------|
| Grain 80 (4 pcs.) | No. 69780 |
| Grain 100 (6 pcs.) | No. 69710 |
| Grain 120 (6 pcs.) | No. 69712 |
| Grain 180 (6 pcs.) | No. 69718 |
| Grain 220 (6 pcs.) | No. 69722 |

For plaster, filler, etc.



G-120

**ROKAMAT provides special solutions
for the building trade**

- EIFS and ETICS
- Drywall
- Renovation
- Plastering

„We have been working with ROKAMAT machines for many years now. Large surfaces are finished in a breath. That is way we save a lot of working time and can take on more jobs.“

Tihamer Vendeg, Plasterer



ROKAMAT GECKO RAPID

Turbo Grinder

No. 82000



- ◆ Double removal rate compared to usual sanders
- ◆ Power grinding (floor screeds, concrete burrs etc.) also smooth grinding (drywall) possible



Edge grinding

Advantages:

- **Up to 3.050 r.p.m.**
- Light weight (tool/drive separation)
- Short- and long-neck grinder in one
- Powerful grinding action with minimum effort due to vacuum exhaust
- Special grinding head: slewable, angle adjustable, designed for edge grinding
- Easy slide-ring for perfectly smooth run
- Compatible with ROKAMAT TAPIR M35



Agile high-speed
surface sander

Technical Data

| | |
|--------------|------------------|
| Tool r.p.m. | 860 - 3.050 |
| Motor output | 1.500 W |
| Weight | Tool: ca. 3,7 kg |
| Length | 110 cm – 160 cm |



Scope of supply:

Supporting plate Ø 230 mm, sanding
and Jöst-Set, in machine case

GECKO RAPID Accessories

Special supporting plate with Velcro, Ø 230 mm

with foam rubber base
for all accessory discs Ø 230 mm

No. 81205

Cleaning and Polishing

| | |
|---|-----------|
| Cleaning pad grain 80, coarse (6 pcs.) | No. 62200 |
| Cleaning pad grain 120, medium (6 pcs.) | No. 62000 |
| Cleaning pad grain 180, fine (6 pcs.) | No. 62100 |
| Polishing pad, very fine (2 pcs.) | No. 62800 |
| Lambskin pad, superfine (2 pcs.) | No. 62900 |

Cleaning and polishing fair-faced concrete.

Sanding

Emery discs in packs of 6

| | | | |
|-----------|-----------|-----------|-----------|
| Grain 40 | No. 61100 | Grain 60 | No. 61200 |
| Grain 80 | No. 61300 | Grain 100 | No. 61400 |
| Grain 120 | No. 61500 | Grain 150 | No. 61600 |

Sanding discs for professional painting and varnishing and for universal use.

JÖST Superpads

Emery discs in packs of 6

| | | | |
|-----------|-----------|-----------|-----------|
| Grain 40 | No. 69840 | Grain 60 | No. 69860 |
| Grain 80 | No. 69880 | Grain 120 | No. 69812 |
| Grain 180 | No. 69818 | Grain 220 | No. 69822 |

Unique full-surface perforations and patented Velcro-type system allows:
full-surface dust extraction (no clogging), higher sanding capacity and shorter sanding time.

Grinding Grids

| | |
|--------------------|-----------|
| Grain 80 (4 pcs.) | No. 69780 |
| Grain 100 (6 pcs.) | No. 69710 |
| Grain 120 (6 pcs.) | No. 69712 |
| Grain 180 (6 pcs.) | No. 69718 |
| Grain 220 (6 pcs.) | No. 69722 |

For plaster, filler, etc.

For aggressive grinding

| | |
|-----------------------------|-----------|
| Metal abrasive disc, fine | No. 60500 |
| Metal abrasive disc, medium | No. 60600 |
| Metal abrasive disc, coarse | No. 60700 |

For grinding timber, brick, screed, carpet remains, fibreglass, gas concrete and many other materials.

Diamond grinding disc „light“

No. 60300

For grinding concrete burrs, floor screeds, etc.

ROKAMAT Concept

The motor is worn comfortably on a belt – thus reducing the weight of the tool and enabling to work for long periods of time without tiring. This concept also keeps dirt particles out of the motor and makes it easier to balance the machine.

The distinguishing feature of ROKAMAT products:
Power transmission via flexible drive shaft.



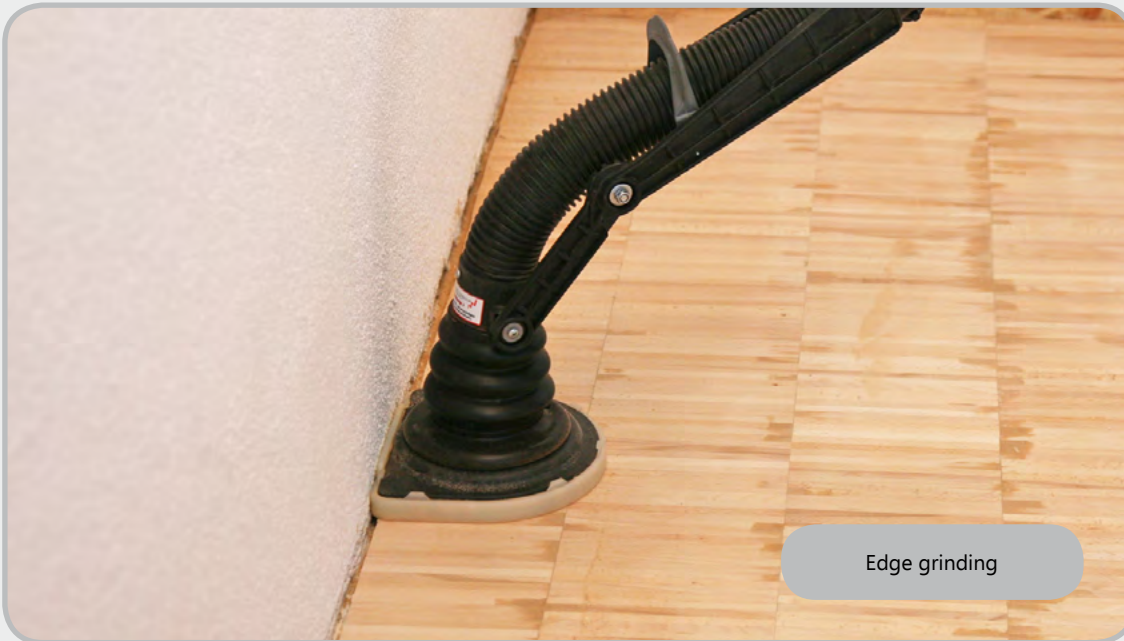
ROKAMAT GEX

Renovation Grinder

No. 85000



- ◆ Agile concrete and renovation grinder for floors, walls and ceilings
- ◆ Super-flexible grinding head
- ◆ Easy convertible to ROKAMAT GEX P Parquet and Timber Grinder



Advantages:

- Special grinding head (sleuable in each direction, angle adjustable, designed for edge grinding)
- High engine power 1.500 Watt
- Short-and long-neck grinder in one (grinding up to 3 m height)
- Powerful grinding action with minimum effort
- Compatible with Special Vacuum Cleaner ROKAMAT TAPIR M35
- Convertible to ROKAMAT GEX P Parquet and Timber Grinder



Renovation Grinder for
Floor, Wall and Seiling

Technical Data

| | |
|--------------|------------------|
| Tool r.p.m. | 2.580 – 9.140 |
| Motor output | 1.500 W |
| Weight | Tool: ca. 3,1 kg |
| Length | 110 – 160 cm |



Scope of supply:
Diamond grinding cup „gold“
Ø 150 mm, in machine case

GEX Accessories

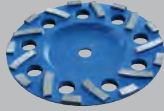
Accessory discs for GEX, Ø 150 mm



Diamond grinding cup gold (hard)

No. 85600

For abrasives material, fresh concrete, painting and others.



Diamond grinding cup blue (medium)

No. 85500

For concrete, screed, natural stone and others.



Diamond grinding cup yellow (soft)

No. 85700

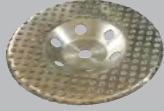
For hard concrete, granite, stone, screed and others.



PCD grinding disc

No. 85200

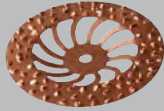
With polycrystalline diamond coat for epoxy resin, urethan and latex paint, old plaster and others.



Diamond grinding disc „light“

No. 85400

For light grinding work (i. e. concrete burrs, floor screeds etc.) and for finishing concrete



Hard metal rasping discs

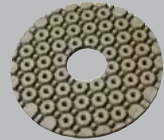
Rasping disc for edge grinding

No. 85300

Rasping disc for surface grinding

No. 85305

For removing adhesive residues and old render.

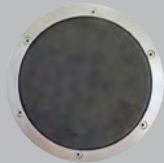


Terrazzo Polishing Set

No. 85800

(Terrazzo diamond polishing discs K50, 100, 200, 400, 800, 1500, 3000)

Accessory discs for GEX P (Ø 150 mm)



Special supporting plate with velcro

No. 84100

For mounting sanding discs.

For grinding parquet and wood

Emery discs in packs of 6

Grain 60

No. 84160

Grain 80

No. 84180

Grain 100

No. 84110

Grain 120

No. 84112

Grain 150

No. 84115

also:

Diamond grinding disc „light“

No. 85400

For renovating varnished grounds.


Special accessories

Hard metal rasping disc

No. 84200

For aggressive grinding of timber.





ROKAMAT GEX

Grinding effortlessly and efficiently

No need to apply pressure

Ergonomic handling

Working for long periods of time without tiring

No worrying about reaching the ceiling
or grinding the edges

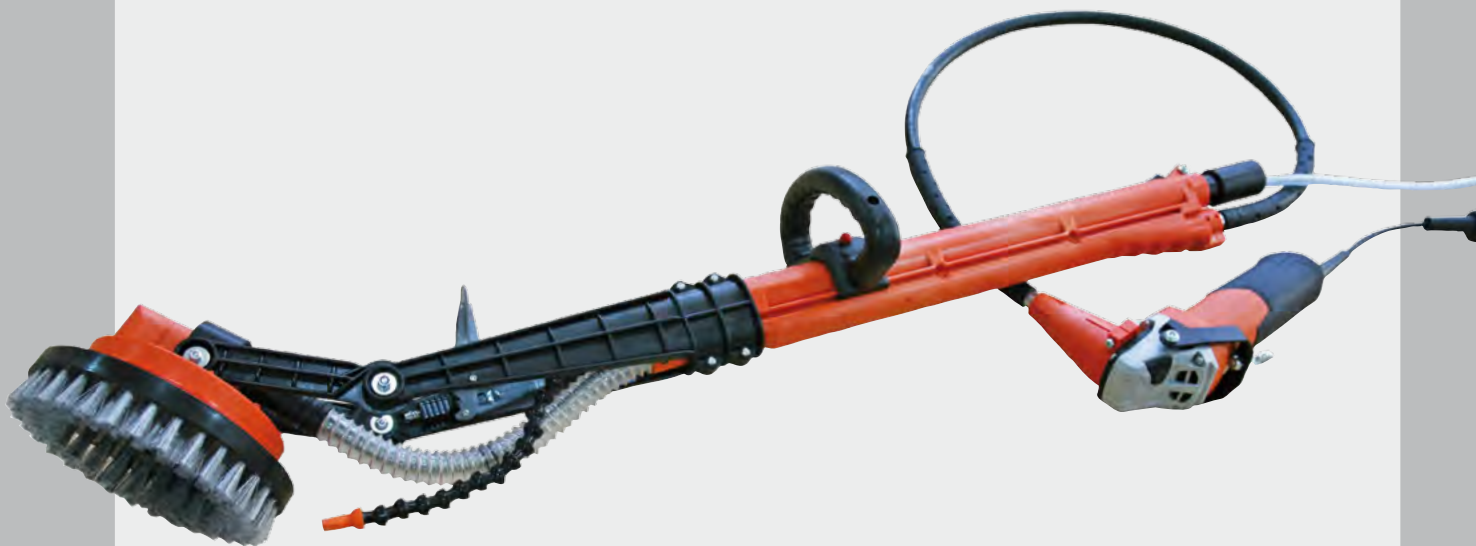
*„It works so smoothly, you don't
want to stop anymore..“*

Eva Krieg, master carpenter, about the Parquet Grinder GEX P



ROKAMAT HEDGEHOG Clean Formwork Cleaner

No. 69600



- ◆ Removes easily concrete residues on formwork elements
- ◆ Shuttering segments can be cleaned in-situe
- ◆ With water connection

Advantages:

- Light weight (tool 3,4 kg)
- High engine power (1.000 W)
- With water injection
- Tool / drive separation - improves weight distribution and reduces dirt build-up in the motor
- Telescopic handle

Accessory discs, Ø 200 mm

Cleaning brushes

| | |
|-----------------------------|-----------|
| Steel brush, fine | No. 69101 |
| Steel brush, medium | No. 69102 |
| Steel brush, coarse | No. 69103 |
| Special steel brush, medium | No. 69107 |
| Special steel brush, coarse | No. 69108 |
| Nylon brush, superfine | No. 69117 |
| Nylon brush, fine | No. 69104 |
| Nylon brush, coarse | No. 69105 |
| Steel / nylon brush | No. 69106 |

Cleaning Pads

| | |
|------------------------------|-----------|
| Supporting plate with velcro | No. 69110 |
| Cleaning pad, coarse | No. 69111 |
| Cleaning pad, medium | No. 69112 |
| Cleaning pad, fine | No. 69113 |



Spine friendly working

Technical Data

| | |
|--------------|------------------|
| Tool r.p.m. | 480 – 1.670 |
| Motor output | 1.000 W |
| Weight | Tool: ca. 3,4 kg |
| Length | 105 cm – 155 cm |



Scope of supply:

Steel brush medium, steel-nylon brush, nylon brush coarse, supporting plate, cleaning-pads coarse, medium, fine Ø 200 mm, in machine case





ROKAMAT PIRANHA Cutter

Joint and Slot Cutter

No. 90200



- ◆ Special tool for hard joints and cable slots
- ◆ Ideal for brick facades or ceramic tiles

Advantages:

- Low-vibration
- Robust aluminium housing
- Motor separated from cutting device ⇒ longer motor life
- Fatigue-free operation due to light weight tool (1,9 kg)
- Almost dust-free renovation of joints (compatible with TAPIR M 35)

Accessories



PIRANHA Miller (attachment)

High Speed Miller for abrasive joints

No. 90090

(Alternatively available as complete machine with flexible drive shaft and motor: No. 90000.
Also diamond milling cutters Ø 6, 8 and 10 mm in different grits.)

Diamond cutting wheel SET Ø 115 mm (3 pcs.)

No. 90120

Vacuum Cleaner for PIRANHA

TAPIR M35 Constant Clean

Special vacuum cleaner with 35 l container and 5 m antistatic suction hose

No. 13500

For harmful dust (dust class M)



For cable slots
in concrete, brick etc.

Technical Data

| | |
|--------------|---------------------------------------|
| Tool r.p.m. | 2.800 – 11.000 |
| Motor output | 1.500 W |
| Weight | Tool: ca. 2,0 kg Motor: ca. 2,6 kg |



Scope of supply:

Joint cutter incl. diamond cutting wheel (3 blades), in machine case





Refurbishing of joints
easy and efficient

ROKAMAT PIRANHA Miller

HIGH SPEED Miller

for abrasive joints

No. 90000



- ◆ 27.500 r.p.m.
- ◆ High speed spindle



Advantages:

- Low-vibration
- Robust aluminium housing
- Motor separated from milling device ⇒ longer motor life
- Ideal also for all kind of short joints (abrasive or hard)
- Almost dust-free renovation of joints (compatible with TAPIR M35)

Accessories

PIRANHA Cutter (attachment)

Joint and slot cutter for hard joints on brick facades or ceramic tiles and cable slots on concrete, brick etc.

(Alternatively available as complete machine with flexible drive shaft and motor: No. 90200)



No. 90290

Diamond milling cutters

| | |
|--|-----------|
| Diamond milling cutter fine Ø 6 mm (1 pc.) | No. 90130 |
|--|-----------|

| | |
|--|-----------|
| Diamond milling cutter fine Ø 8 mm (1 pc.) | No. 90131 |
|--|-----------|

| | |
|---|-----------|
| Diamond milling cutter fine Ø 10 mm (1 pc.) | No. 90132 |
|---|-----------|

For short hard joints.

| | |
|--|-----------|
| Diamond milling cutter coarse Ø 6 mm (1 pc.) | No. 90140 |
|--|-----------|

| | |
|--|-----------|
| Diamond milling cutter coarse Ø 8 mm (1 pc.) | No. 90141 |
|--|-----------|

| | |
|---|-----------|
| Diamond milling cutter coarse Ø 10 mm (1 pc.) | No. 90142 |
|---|-----------|

For long and short abrasive joints (mortar).



Vacuum cleaner für PIRANHA

TAPIR M35 Constant Clean

| | |
|--|-----------|
| Special vacuum cleaner with 35 l container and 5 m antistatic suction hose | No. 13500 |
|--|-----------|

For harmful dust (dust class M)



Technical Data

| | |
|--------------|---------------------------------------|
| Tool r.p.m. | 7.000 – 27.500 |
| Motor output | 1.500 W |
| Weight | Tool: ca. 2,4 kg Motor: ca. 2,6 kg |



Scope of supply:

Joint miller incl. 2 pcs. diamond milling cutters Ø 8 mm, in machine case

ROKAMAT TAPIR M35 Constant Clean

Art.-Nr. 13500

- ◆ Permanent filter cleaning without interrupting intake flow
- ◆ Special Vacuum Cleaner for harmful dust (dust class M)
- ◆ Designed antistatic (Antistatic suction hose)



Scope of supply:

Antistatic suction hose (5m), 1 pc. plastic sac

TAPIR M35 Accessories

Plastic sac

5 pcs.

No. 13008

For harmful dust (dust class M)

Nonwoven fabric filter bag

5 pcs.

No. 13009

For non-mineral dust (i. e. house dust)

Accessory set

Standard Accessory set (5 pcs.)

No. 13010

Adapter

Stepped adapter for Ø in mm: 25,5 – 26,5
30,5 – 32,5
36,0 – 38,0

No. 13015



TAPIR M35 in combination with ROKAMAT GEX

Technical Data

| | | | | | | |
|---------------|----------|-----------|---------|------|-----------------------|----------|
| Motor output | 1.400 W | Container | - gross | 35 l | Dimensions cm (LxWxH) | 55x40x55 |
| Max. air flow | 42 l/s | | - dust | 25 l | Weight | 15 kg |
| Max. air flow | 220 mbar | | - water | 22 l | | |

ROKAMAT Rucksack Vacuum Cleaner

No. 10000

- ◆ Total freedom of movement!
- ◆ Clean working on scaffolding
- ◆ Short hose length to maximise high suction power

Scope of supply:

No. 10000 incl. 5 pcs. paper filter bags

No. 12000 incl. 2 battery packs, battery charger, paper filter bag, fabric filter bag (reusable)

Rucksack Vacuum Cleaner Accessories

Paper filter bags

15 l capacity (10 pcs.) No. 10001

For fine dust e. g. plaster, mineral wool dust and house dust.

Fabric filter bag

15 l capacity No. 10002

Only for polystyrene dust. With zip fastener - to be emptied (reusable).

Lamellar filter

Additional filter as motor protection. No. 10003

Accessory set (11 pcs.)

Turbo nozzle, suction nozzle, floor upholstery nozzle, upholstery nozzle, joint nozzle, suction brush, radiator brush, suction hose, 2 tubes, adapter

No. 10004

Also suited for private use

Also available
as wireless version
(No. 12000)



Rucksack Vacuum Cleaner in combination with CHAMELEON

Technical Data

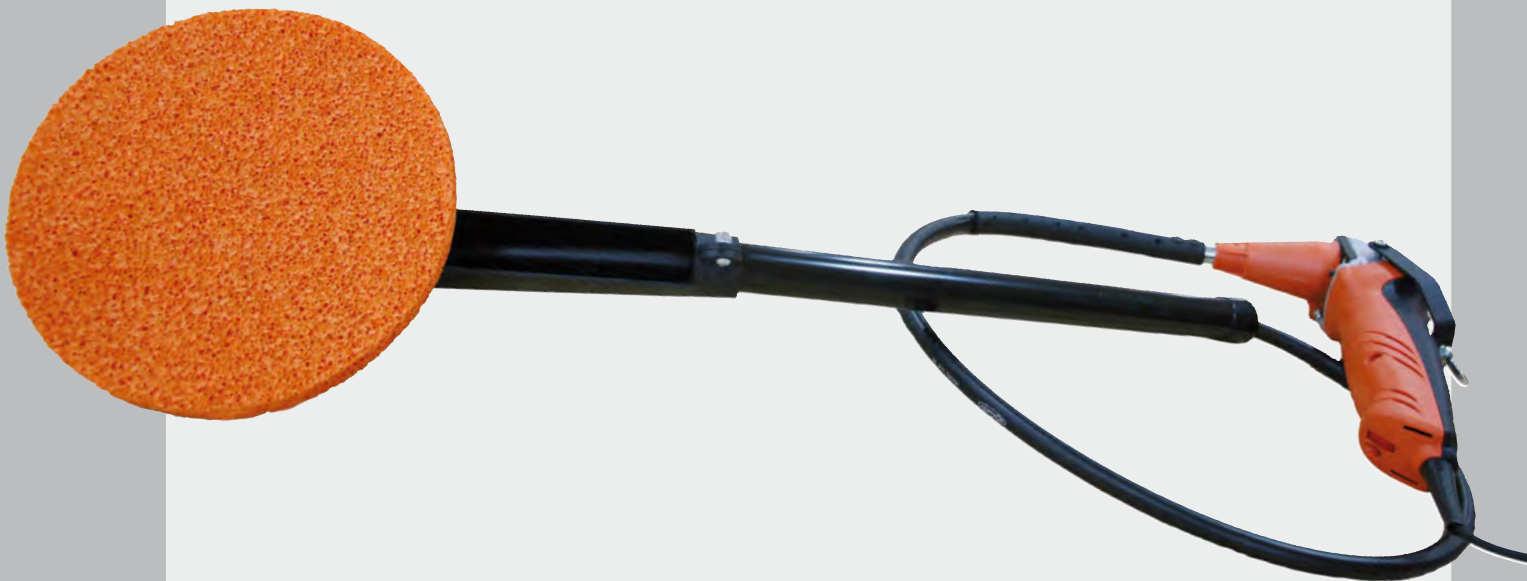
| Electric Version (No. 10000) | | Wireless Version (No. 12000) | | |
|------------------------------|----------|------------------------------|------------------------|------------|
| Motor output | 1.100 W | 500 W | Dimensions cm: (LxWxH) | 20x43x63 |
| Max. air flow | 60 l/s | 31 l/s | Weight: | ca. 6,5 kg |
| Max. vacuum | 190 mbar | 32 mbar | Container | 15 l |



ROKAMAT DRY

Plaster Finishing Machine

No. 30000



- ◆ Machining plaster and lime-cement render
- ◆ Also for sponging filler compounds – saving the grinding process!



Also available
as wireless version
(Page 4)

Advantages:

- Light weight
- Uniform structure through large headed work surface
- High speed through work (saving approximately 50 % of time)
- Continuous speed control for optimal working
- Break-proof
- Tool / drive separation ⇒ improves weight distribution and reduces soiling



Relaxed machining due to
low machine weight

Technical Data

| | |
|--------------|---------------------------------------|
| Tool r.p.m. | 100 - 340 |
| Motor output | 1.000 W |
| Weight | Tool: ca. 2,4 kg Motor: ca. 2,4 kg |



Scope of supply:

Sponge disc No. 33000 Ø 250 mm,
in machine case



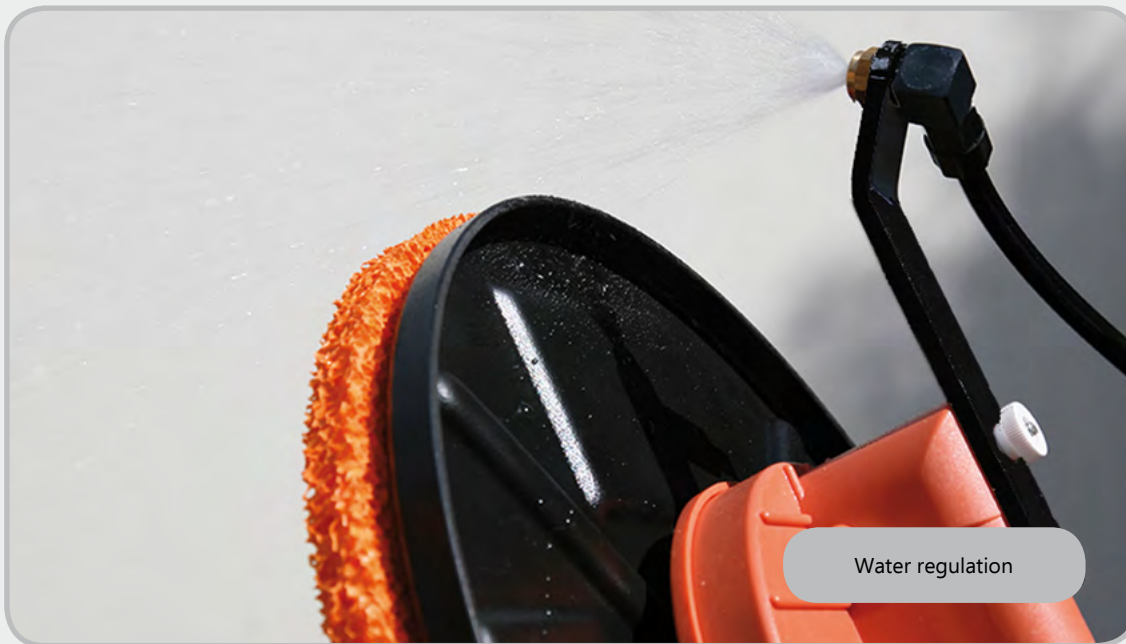
ROKAMAT WET

Plaster Finishing Machine with water injection

No. 40000



- ◆ Machining plaster and lime-cement render
- ◆ With water injection: For high water needs to generate a filler slurry
- ◆ Also for sponging filler compounds – saving the grinding process!



Advantages:

- Light weight
- Uniform structure through large headed work surface
- High speed through work (saving approximately 70 % of time)
- Continuous speed control for optimal working
- Break-proof
- Tool / drive separation ⇒ improves weight distribution and reduces soiling
- Special version: with head articulation for ceilings

Technical Data

| | |
|--------------|-------------------|
| Tool r.p.m. | 100 - 340 |
| Motor output | 1.000 W |
| Weight | Tool: ca. 2,8 kg |
| | Motor: ca. 2,4 kg |



Scope of supply:

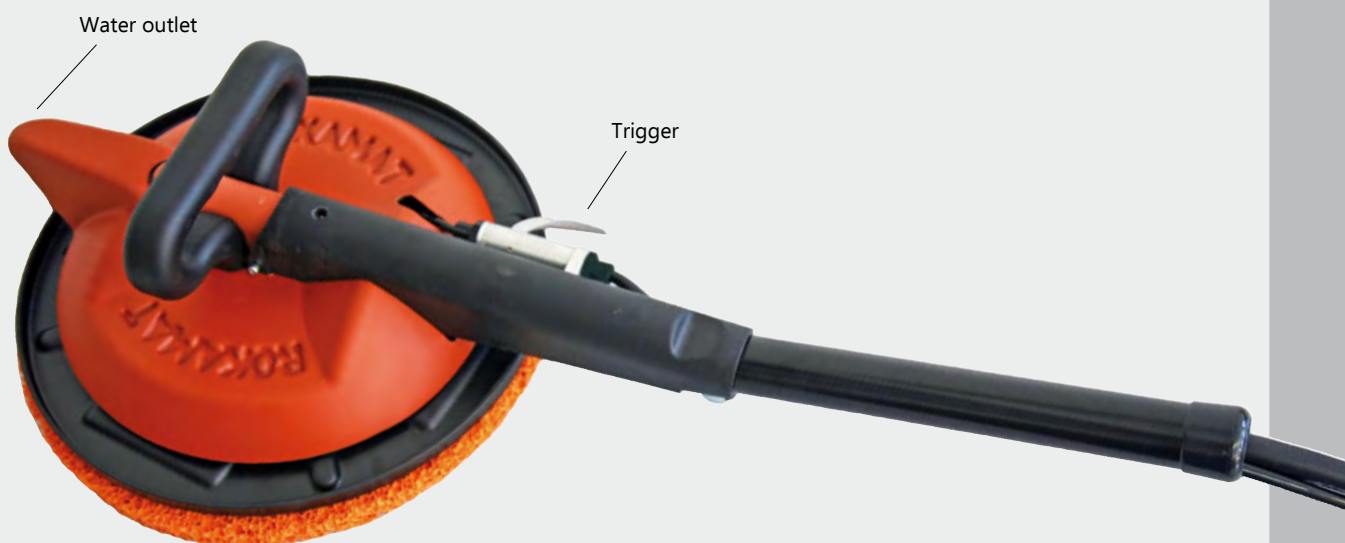
Supporting plate (Velcro System)
 Ø 350 mm, sponge 49300,
 in machine case



ROKAMAT NAUTILO

Plaster Finishing Machine with backpack tank

No. 70000



- ◆ Machining plaster and lime-cement render
- ◆ Also for sponging filler compounds – saving the grinding process!



**For perfect
render surfaces!**

No extra water
supply needed!

Advantages:

- Integrated backpack water tank (6 l)
- Level working result
- About 70 % time saving compared to manual work
- Adjustable water injection (until 3l/min)
- Leight weight tool holder



Easy working
on scaffolding

Water tank



Technical Data

| | |
|--------------|------------------|
| Tool r.p.m. | 100 - 340 |
| Motor output | 600 W |
| Weight | Tool: ca. 2,4 kg |
| Water tank | 6 l |



Scope of supply:

Supporting plate (Velcro System)
Ø 350 mm, sponge 49300,
in machine case

Accessories Plaster Finishing Machines

Adhesive System for Ø 250 mm

Sponge Discs

| | |
|----------------------|-----------|
| Sponge disc, coarse | No. 33000 |
| Spare sponge, coarse | No. 33100 |
| Sponge disc, fine | No. 33400 |
| Spare sponge, fine | No. 33500 |

For sponging plaster and lime-cement render, for generating a fine surface structure or for sponging filler compounds and clay plaster

| | |
|-------------------------|-----------|
| Sponge disc, superfine | No. 33800 |
| Spare sponge, superfine | No. 33900 |

For generating a fine surface structure

Felt Disc

| | |
|-----------------|-----------|
| Felt disc | No. 33200 |
| Spare felt disc | No. 33300 |

Rubbing internal and external lime-cement render surfaces

Cellular Rubber Disc

| | |
|----------------------------|-----------|
| Cellular rubber disc | No. 33600 |
| Spare cellular rubber disc | No. 33700 |

Levelling render surfaces with cellular rubber covering

**Accessories for
SPONGE FLOAT (S. 4)
DRY (S. 36)
WET (S. 38)**

Accessories Plaster Finishing Machines

Velcro System for Ø 350 mm

Base plate

for all accessory discs Ø 350 mm
(No. 48100 - 49900)

No. 48000

Rubbing Plates

Rubbing plate with Velcro, perforated

No. 48100

Rubbing plate with Velcro, smooth

No. 48200

For smoothing mortar

Sponge Discs

Sponge with Velcro, coarse

No. 49300

Sponge with Velcro, fine

No. 49400

Sponge on plastic backing with Velcro, coarse*

No. 48300

Sponge on plastic backing with Velcro, fine*

No. 48400

For sponging plaster and lime-cement render, for generating a fine surface structure or for sponging filler compounds and clay plaster (Sponges on plastic backing can be worked off completely!)

Sponge with Velcro, superfine

No. 49500

Sponge on plastic backing with Velcro, superfine*

No. 48500

For generating a fine surface structure

(Sponges on plastic backing can be worked off completely!)

Sponge with Velcro, blue

No. 49800

Sponge with Velcro, brown

No. 49900

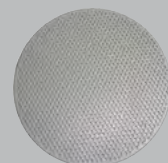
For fine plastering (very fine grain)

Felt Disc

Felt disc with Velcro

No. 49600

Rubbing internal and external lime-cement render surfaces



* Innovative accessory:
sponge on plastic backing

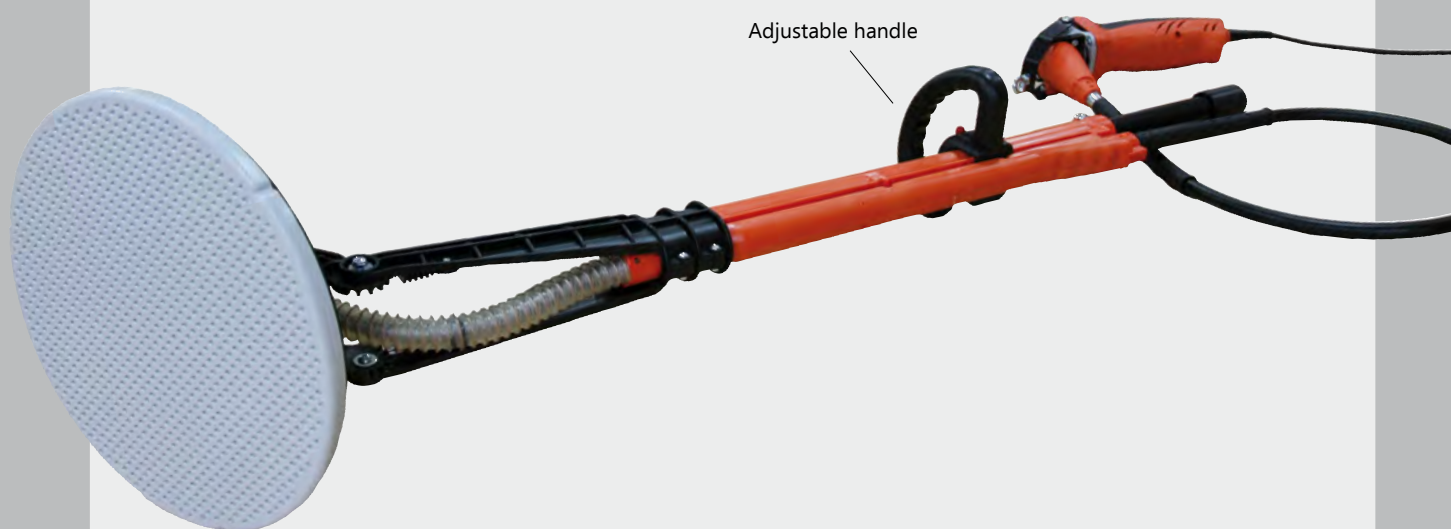
Accessories for
SPONGE FLOAT (S. 4)
DRY (S. 36)
WET (S. 38)
NAUTILO (S. 40)



ROKAMAT SKATE

Concrete Power Trowel

No. 93000



- ◆ Levelling and troweling fresh concrete and screed
- ◆ The effective solution for smooth concrete surfaces

Advantages:

- Perfect compact finish
- Easy handling
- Quick and efficient working
- Perfect flatness on small **and** large areas

Velcro System for Ø 350 mm

Base plate

for all accessory discs Ø 350 mm
(No. 48100 und 48200)

No. 48000

Trowels

Trowel with Velcro, perforated

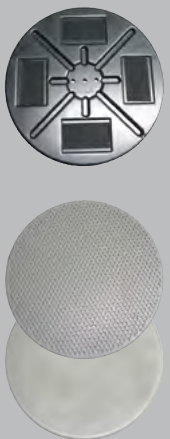
No. 48100

Pre-Troweling - leveling unevenness and holes

Trowel with Velcro, smooth

No. 48200

Trowel finishing on fresh concrete and screed areas



Spine friendly working

Technical Data

| | |
|--------------|------------------|
| Tool r.p.m. | 480 – 1.670 |
| Motor output | 1.000 W |
| Weight | Tool: ca. 3,7 kg |



Scope of supply:

Supporting plate (Velcro System)
Ø 350 mm, trowels 48100 and 48200
in machine case



ROKAMAT Concrete Vibrator

No. 91100



◆ For compacting concrete

Advantages:

- Light weight and handy
- Motor uncoupled (mounted on a waistbelt)
- Effective compacting radius due to high centrifugal forces
- Robust covering
- High quality material

Concrete Vibrator models

| | |
|------------------------------------|-----------|
| Version 1,3 m flexible drive shaft | No. 91100 |
| Version 2,0 m flexible drive shaft | No. 91200 |
| Version 3,0 m flexible drive shaft | No. 91300 |



Easy and effective

Technical Data

| | |
|---------------------|----------------|
| Motor output | 1.000 W |
| Diameter vibrator: | 43 mm |
| Length vibrator: | 280 mm |
| Deflection: | ca. 4 mm w. l. |
| Centrifugal force: | max. 5370 N |
| Effective diameter: | 800 mm |



Scope of supply:

Vibrator Ø 43 mm with flexible drive shaft 1,3 m and motor, in machine case



Contact

ROKAMAT

Kammerer GmbH
An der B10
D-75196 Remchingen

Phone: +49 (0) 7232 / 31393 0
Fax: +49 (0) 7232 / 31393 20

info@rokamat.com
www.rokamat.com

