

MAX40 – Combined Bending & Cutting Machine



Technical Details

Dimensions Machine:	100 x 99 x 88 cm
Weight (without accessories):	540 kg
Motor Power Bending:	3 kW
Motor Power Cutting:	2,2 kW
Voltage:	380 V
Frequency:	50 Hz
Bending Speed:	6,5 rpm
Bending Plate-Ø:	400 mm

Bending Capacity

Steel Strength	Diameter (mm) / Piece			
450 N/mm ²	Ø 36x1	Ø 18x2	Ø 12x3	Ø 10x4
650 N/mm ²	Ø 32x1	Ø 16x2	Ø 10x3	Ø 8x4
850 N/mm ²	Ø 28x1	Ø 14x2	Ø 8x3	Ø 6x4

Accessories

Bending Pin: 4 pcs. – Ø32 | Ø48mm

Stirrup Pin: 1 pc. – Ø25 | Ø32mm

Straight Pin: 1 pc. – Ø32 | Ø33mm

Adjustm. Key: 1 pc.

Foot Pedal: 1 pc.

Retainer: 1 pc.

Key: 1 pc.

Switch Pin: 6 pcs.

Bending Bush: Ø70, Ø90, Ø110, Ø130mm



Bending Pin



Stirrup Pin



Straight Pin



Bending Bush



Foot Pedal



Retainer



Key



Switch Pin



Adjustment Key

Cutting Capacity

Steel Strength	Diameter (mm) / Piece			
450 N/mm ²	Ø 32x1	Ø 18x2	Ø 14x3	Ø 12x4
650 N/mm ²	Ø 28x1	Ø 16x2	Ø 12x3	Ø 10x4
850 N/mm ²	Ø 24x1	Ø 14x2	Ø 10x3	Ø 8x4

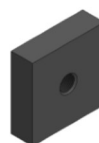
Accessories

Blade (separately):

2 pcs. – 65 x 65 x 17mm

Allen Key:

1 pc. – 10mm



Blade



Allen Key

Description

The machine is designed for bending and cutting rebar / reinforcement steel.

When bending, after the switch has been set to bending, the material is placed on the bending plate and bolts are fitted. Using the pins and bending bushes, the material can be bent in both manual and automatic mode by pressing the foot pedal. Up to 9 bending sequences can be programmed and the angles can be set using the switch pins.

When cutting, after the switch has been set to cutting, the material is inserted between the blades and the retainer is set as a counter-hold. The protective flap is then folded down. The material can now be cut by pressing the foot pedal.

Use

The machine is used in the construction sector for bending and cutting rebar to the desired shape or length.