



**GÖÇMAKSAN®**

The Power Bringing Rebar To Heel

*REBAR*  
**BENDING & CUTTING**  
*MACHINES*



İNŞAAT DEMİRİ  
**KESME ve BÜKME**  
MAKİNALARI





### MG 20B

- Dijital kumanda ekranı opsiyonu
- 220 V / 380V opsiyonu
- Kolay taşınır
- Digital control options
- 220 V / 380V options
- Easy to carry

### POWER 24

- Taşıma Kolaylığı
- Portatif Çözümler
- Easy to handle
- Portable solution on construction site

### BT 24 X5

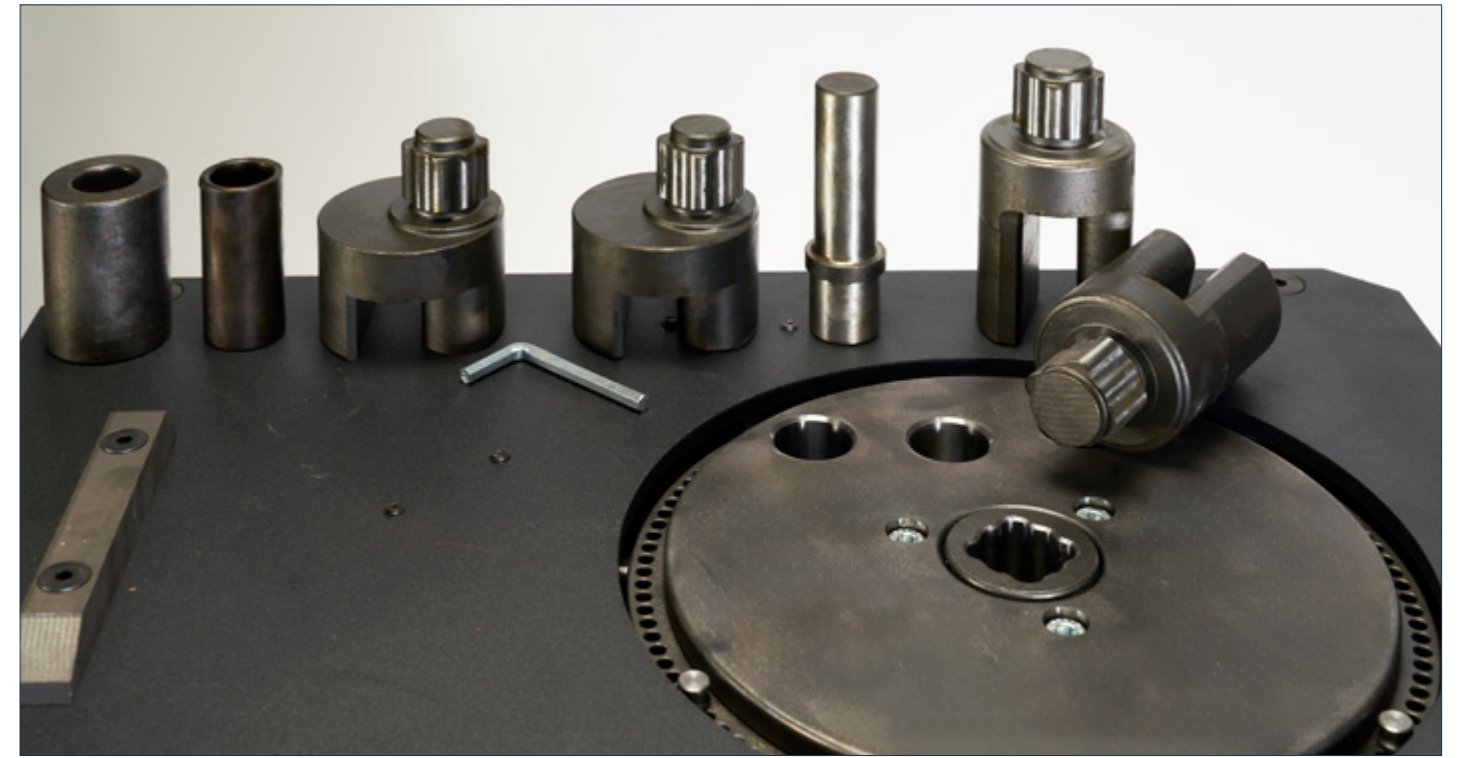


- Özel etriye başlığı
- Dijital kumanda ekranı opsiyonu
- 220 V / 380V opsiyonu
- Special stirrup bending pin
- Digital control options
- 220 V / 380V options

### BT 26



- Özel etriye başlığı
- Dijital kumanda ekranı opsiyonu
- Kolay taşınır
- Special stirrup bending pin
- Digital control options
- Easy to carry



Model	TEKNİK ÖZELLİKLER TECHNICAL SPECIFICATIONS					KESİM & BÜKÜM KAPASİTELERİ BENDING & CUTTING CAPACITIES					
	En - Boy - Yük. (cm) W - L - H (cm)	Motor Gücü (kW) Motor Power (kW)	Voltaj (V) Voltage (V)	Ağırlık (kg) Weight (kg)	Hid. Yağ. Kaps. Hydraulic Oil Tank Capacity (lt)	45 kg/mm <sup>2</sup> Demir Çapı (Ø) x Adet Diameter (Ø) x Piece		65 kg/mm <sup>2</sup> Demir Çapı (Ø) x Adet Diameter (Ø) x Piece		85 kg/mm <sup>2</sup> Demir Çapı (Ø) x Adet Diameter (Ø) x Piece	
MG 20B	49 / 60 / 32	1,5	380 / 220	95	-	Ø 20 x 1	Ø 14 x 2	Ø 18 x 1	Ø 12 x 3	Ø 16 x 1	Ø 10 x 4
BT 24x5	63 / 70 / 62	1,5	380 / 220	145	-	Ø 24 x 1	Ø 16 x 2	Ø 22 x 1	Ø 14 x 2	Ø 20 x 1	Ø 12 x 3
BT 26	63 / 70 / 62	2,2	380	150	-	Ø 26 x 1	Ø 16 x 2	Ø 22 x 1	Ø 14 x 2	Ø 20 x 1	Ø 12 x 3
POWER 24	53 / 79 / 73	2,2	380 / 220	90	7	Ø 24 x 1	Ø 14 x 2	Ø 20 x 1	Ø 10 x 3	Ø 16 x 1	Ø 8 x 4



**B 45x1**



**B 26**



**B 36**



**B 50**



- Planet redüktör
- 9 Farklı Büküm Kaydetme Özelliği
- Manuel ve otomatik kontrol opsiyonu

- Planetary Reducer System
- Program Saving Option (9 Different bending angle)
- Can be controlled manual and automatic



Dijital Kontrol Paneli İçin  
Digital Display Control  
**BD Serisi Series**

Model	TEKNİK ÖZELLİKLER TECHNICAL SPECIFICATIONS				BÜKÜM KAPASİTELERİ BENDING CAPACITIES					
	En - Boy - Yük. (cm) W - L - H (cm)	Motor Gücü (kW) Motor Power (kW)	Voltaj (V) Voltage (V)	Ağırlık (kg) Weight (kg)	45 kg/mm <sup>2</sup> Demir Çapı (Ø) x Adet Diameter (Ø) x Piece		65 kg/mm <sup>2</sup> Demir Çapı (Ø) x Adet Diameter (Ø) x Piece		85 kg/mm <sup>2</sup> Demir Çapı (Ø) x Adet Diameter (Ø) x Piece	
<b>B 26</b>	72/77/87	2,2	380	218	Ø 26 x 1	Ø 16 x 2	Ø 24 x 1	Ø 14 x 3	Ø 22 x 1	Ø 12 x 5
<b>B 36</b>	78/87/89	3	380	285	Ø 36 x 1	Ø 22 x 2	Ø 32 x 1	Ø 20 x 2	Ø 28 x 1	Ø 16 x 2
<b>B 45x1</b>	83/111/89	4	380	392	Ø 45 x 1	Ø 30 x 2	Ø 40 x 1	Ø 26 x 2	Ø 32 x 1	Ø 20 x 2
<b>B 50</b>	86/119/89	5,5	380	457	Ø 50 x 1	Ø 32 x 2	Ø 45 x 1	Ø 30 x 2	Ø 36 x 1	Ø 28 x 2



**BS 50**



**BS 36**



**BS 45**



**BS 60**

- İki büküm aparatıyla hızlı büküm
- Sağa ve sola Hareket kabiliyeti
- Uzun Tabla

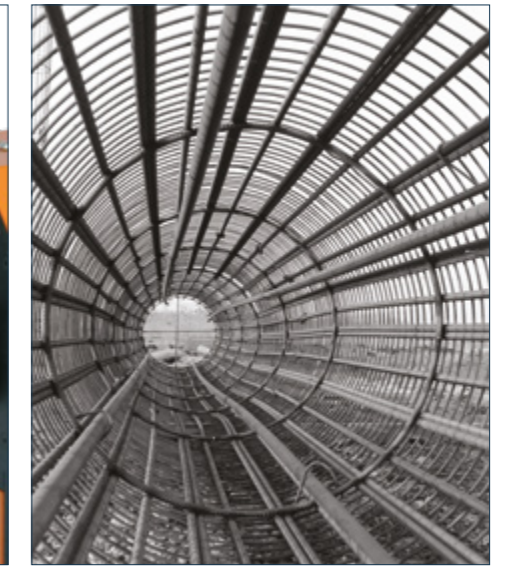
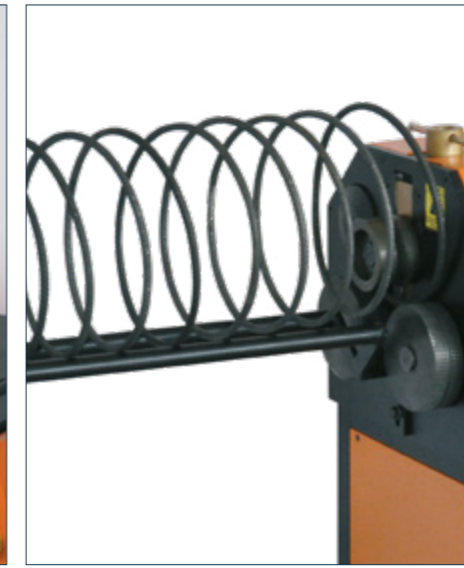
- Fast bending with 2 bending sleeve
- Turning Left & Right
- Long Table



Model	TEKNİK ÖZELLİKLER TECHNICAL SPECIFICATIONS				BÜKÜM KAPASİTELERİ BENDING CAPACITIES					
	En - Boy - Yük. (cm) W - L - H (cm)	Motor Gücü (kW) Motor Power (kW)	Voltaj (V) Voltage (V)	Ağırlık (kg) Weight (kg)	45 kg/mm <sup>2</sup> Demir Çapı (Ø) x Adet Diameter (Ø) x Piece		65 kg/mm <sup>2</sup> Demir Çapı (Ø) x Adet Diameter (Ø) x Piece		85 kg/mm <sup>2</sup> Demir Çapı (Ø) x Adet Diameter (Ø) x Piece	
<b>BS 36</b>	83/111/90	3	380	350	Ø 36 x 1	Ø 22 x 2	Ø 32 x 1	Ø 20 x 2	Ø 28 x 1	Ø 16 x 2
<b>BS 45</b>	83/122/90	4	380	462	Ø 45 x 1	Ø 30 x 2	Ø 40 x 1	Ø 26 x 2	Ø 32 x 1	Ø 20 x 2
<b>BS 50</b>	88/141/90	5,5	380	700	Ø 50 x 1	Ø 32 x 2	Ø 45 x 1	Ø 30 x 2	Ø 36 x 1	Ø 28 x 2
<b>BS 60</b>	98/154/90	7,5	380	585	Ø 60 x 1	Ø 38 x 2	Ø 55 x 1	Ø 34 x 2	Ø 50 x 1	Ø 30 x 2



**SX 40**



**SX 26**



**SX 36**



**S 50H**



- min 170 mm'dan istenilen ölçüye kadar spiral büküm özelliği

- Spiral bending feature from min 170 mm to desired size

Model	TEKNİK ÖZELLİKLER TECHNICAL SPECIFICATIONS					BÜKÜM KAPASİTELERİ BENDING CAPACITIES			
	En - Boy - Yük. (cm) W - L - H (cm)	Motor Gücü (kW) Motor Power (kW)	Motor Devri (rpm) Rotation	Voltaj (V) Voltage (V)	Ağırlık (kg) Weight (kg)	45 kg/mm <sup>2</sup> Demir Çapı (Ø) x Adet Diameter (Ø) x Piece	65 kg/mm <sup>2</sup> Demir Çapı (Ø) x Adet Diameter (Ø) x Piece	85 kg/mm <sup>2</sup> Demir Çapı (Ø) x Adet Diameter (Ø) x Piece	Minimum Dairesel Büküm Çapı Minimum Spiral Bending Diameter
<b>SX 26</b>	56/77/101	1,5	1450	380	194	Ø 22 x 1	Ø 18 x 1	Ø 18 x 1	170
<b>SX 36</b>	76/105/98	2,2	1387	380	300	Ø 28 x 1	Ø 24 x 1	Ø 20 x 1	200
<b>SX 40</b>	87/119/86	3	1387	380	477	Ø 32 x 1	Ø 28 x 1	Ø 26 x 1	270
<b>S 50H</b>	111/144/102	3	1450	380	570	Ø 42 x 1	Ø 36 x 1	Ø 30 x 1	270



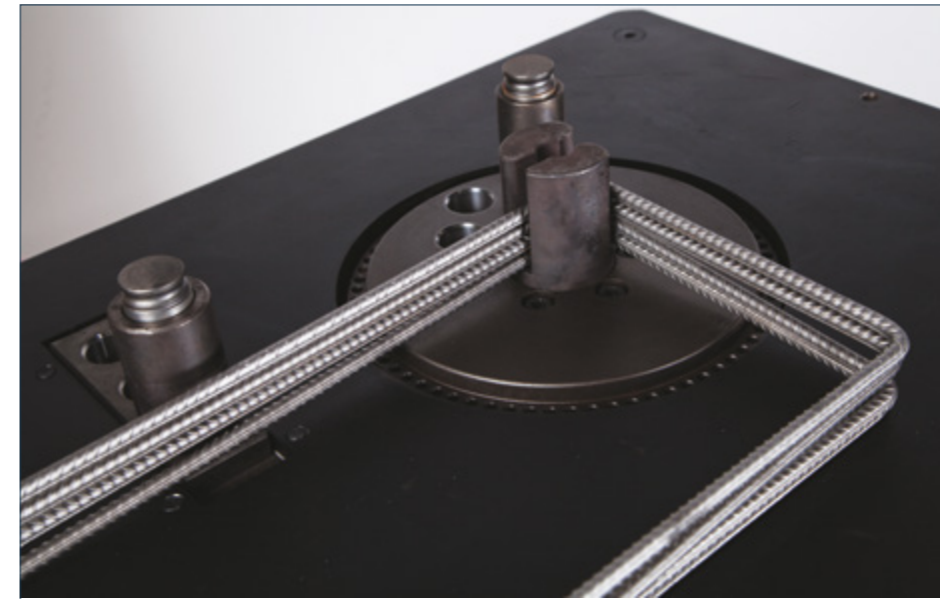
**SL 30**



**SL 36**

- Açı değiştirmeden otomatik tekrar
- Kolay sabitleme
- Güçlü redüktör devri

- Repeated automatically without readjusting angles
- Easy to fix
- Reducer cycle is more strong



**TEKNİK ÖZELLİKLER TECHNICAL SPECIFICATIONS**

Model	En - Boy - Yük. (cm) W - L - H (cm)	Motor Gücü (kW) Motor Power (kW)	Voltaj (V) Voltage (V)	Ağırlık (kg) Weight (kg)
SL 30	75/76/88	3	380	275
SL 36	78/87/89	3	380	340

**BÜKÜM KAPASİTELERİ BENDING CAPACITIES**

45 kg/mm <sup>2</sup> Demir Çapı (Ø) x Adet Diameter (Ø) x Piece		65 kg/mm <sup>2</sup> Demir Çapı (Ø) x Adet Diameter (Ø) x Piece		85 kg/mm <sup>2</sup> Demir Çapı (Ø) x Adet Diameter (Ø) x Piece	
Ø 30 x 1	Ø 16 x 2	Ø 24 x 1	Ø 14 x 2	Ø 22 x 1	Ø 12 x 2
Ø 36 x 1	Ø 18 x 2	Ø 30 x 1	Ø 14 x 2	Ø 24 x 1	Ø 12 x 2



**H 45S**



**H 26**



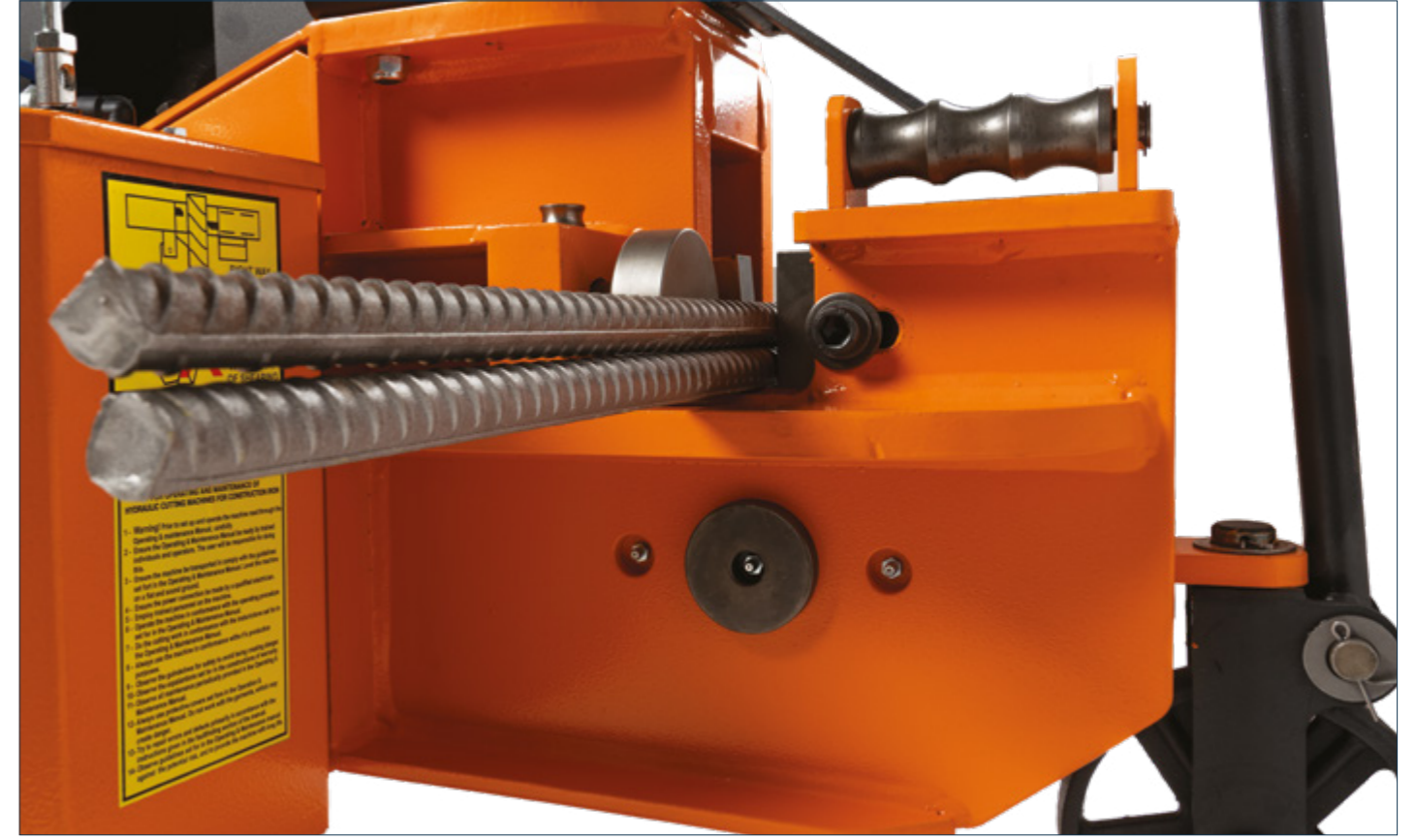
**H 38S**



**H 36S**



**H 55**



- Hidrolik Sistem
- Ayarlanabilir bıçak desteği
- Sessiz, güvenli ve çevre dostu
- Düşük bakım maliyetleri
- Uzun ömürlü kullanım
- Güçlendirilmiş çelik gövde
- *Hydraulic System*
- *Adjustable blade stopper*
- *Silent, safe and environment friendly*
- *Easy Maintenance*
- *Long lasting*

Model	TEKNİK ÖZELLİKLER TECHNICAL SPECIFICATIONS						KESİM KAPASİTELERİ CUTTING CAPACITIES					
	En - Boy - Yük. (cm) W - L - H (cm)	Motor Gücü (kW) Motor Power (kW)	Mot. Frekansı (Hz) Frequency (Hz)	Voltaj (V) Voltage (V)	Ağırlık (kg) Weight (kg)	Hid. Yağ. Kaps. Hydraulic Oil Tank Capacity (lt)	45 kg/mm <sup>2</sup> Demir Çapı (Ø) x Adet Diameter (Ø) x Piece		65 kg/mm <sup>2</sup> Demir Çapı (Ø) x Adet Diameter (Ø) x Piece		85 kg/mm <sup>2</sup> Demir Çapı (Ø) x Adet Diameter (Ø) x Piece	
<b>H 26</b>	54/100/78	2,2	50	380	120	7	Ø 26 x1	Ø 16 x2	Ø 22 x1	Ø 12 x2	Ø 20 x1	Ø 10 x2
<b>H 36S</b>	53/105/80	2,2	50	380	165	13	Ø 36 x1	Ø 22 x2	Ø 29 x1	Ø 19 x2	Ø 22 x1	Ø 16 x2
<b>H 38S</b>	61/123/80	3	50	380	273	17,5	Ø 38 x1	Ø 26 x2	Ø 36 x1	Ø 22 x2	Ø 32 x1	Ø 20 x2
<b>H 45S</b>	65/136/79	4	50	380	321	17,5	Ø 45 x1	Ø 36 x2	Ø 42 x1	Ø 30 x2	Ø 34 x1	Ø 26 x2
<b>H 55</b>	75/154/102	7,5	50	380	482	35	Ø 55 x1	Ø 32 x2	Ø 52 x1	Ø 28 x2	Ø 42 x1	Ø 26 x2



**M 45**

**M 36**



**M 55**



- Mekanik sistem
- Yüksek kesim performansı
- 0,8 saniyede kesim
- El ve ayakla kontrol kabiliyeti
- Mechanical system
- High cutting performance
- 0,8 sec cutting time
- Foot Pedal and Arm Control



Model	TEKNİK ÖZELLİKLER TECHNICAL SPECIFICATIONS				KESİM KAPASİTELERİ CUTTING CAPACITIES					
	En - Boy - Yük. (cm) W - L - H (cm)	Motor Gücü (kW) Motor Power (kW)	Voltaj (V) Voltage (V)	Ağırlık (kg) Weight (kg)	45 kg/mm <sup>2</sup> Demir Çapı (Ø) x Adet Diameter (Ø) x Piece		65 kg/mm <sup>2</sup> Demir Çapı (Ø) x Adet Diameter (Ø) x Piece		85 kg/mm <sup>2</sup> Demir Çapı (Ø) x Adet Diameter (Ø) x Piece	
<b>M 36</b>	54/101/79	3	380	325	Ø 36 x 1	Ø 24 x 2	Ø 32 x 1	Ø 20 x 2	Ø 28 x 1	Ø 18 x 2
<b>M 45</b>	51/110/85	3	380	435	Ø 45 x 1	Ø 36 x 2	Ø 42 x 1	Ø 30 x 2	Ø 30 x 1	Ø 24 x 2
<b>M 55</b>	66/136/94	3	380	675	Ø 55 x 1	Ø 32 x 2	Ø 45 x 1	Ø 28 x 2	Ø 36 x 1	Ø 24 x 2





**SH 45**



**SH 60**

- Çift etkili hidrolik sistem
- Yüksek kesim performansı
- Manuel ve otomatik kontrol kabiliyeti
- Dual-affect hydraulic system
- High cutting performance
- Can be controlled both automatically and manually



Model	TEKNİK ÖZELLİKLER TECHNICAL SPECIFICATIONS					KESİM KAPASİTELERİ CUTTING CAPACITIES					
	En - Boy - Yükl. (cm) W - L - H (cm)	Motor Gücü (kW) Motor Power (kW)	Voltaj (V) Voltage (V)	Ağırlık (kg) Weight (kg)	Hid. Yağ. Kaps. Hydraulic Oil Tank Capacity (lt)	45 kg/mm <sup>2</sup> Demir Çapı (Ø) x Adet Diameter (Ø) x Piece		65 kg/mm <sup>2</sup> Demir Çapı (Ø) x Adet Diameter (Ø) x Piece		85 kg/mm <sup>2</sup> Demir Çapı (Ø) x Adet Diameter (Ø) x Piece	
SH 45	86/132/100	5,5	380	592	105	Ø 42 x1	Ø 38 x2	Ø 38 x1	Ø 32 x2	Ø 32 x1	Ø 26 x2
SH 60	70/172/114	7,5	380	960	163	Ø 60 x1	Ø 36 x2	Ø 50 x1	Ø 28 x2	Ø 45 x1	Ø 26 x2



- Max: 36 mm Büküm
- Filiz Demir Bükümü

- Max: 36 mm Bending
- Dowel Bar Bending

**A 40**



- Hidromekanik
- Max: 30 mm Kesim
- Max: 36 mm Büküm
- Düşük enerji tüketimi
- Hydramechanical
- Max: 30 mm Cutting
- Max: 36 mm Bending
- Low energy consumption

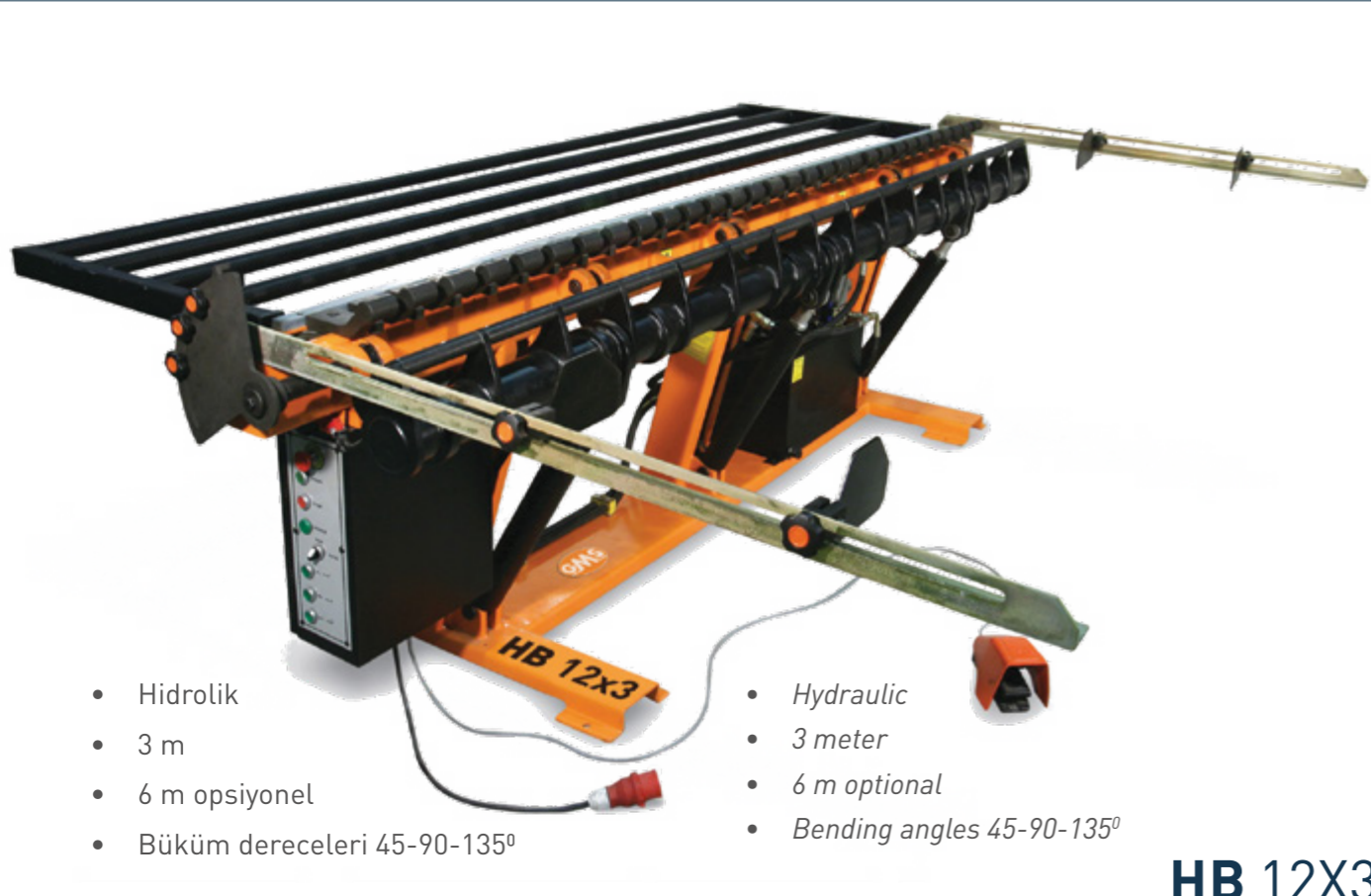


**MAX 40**



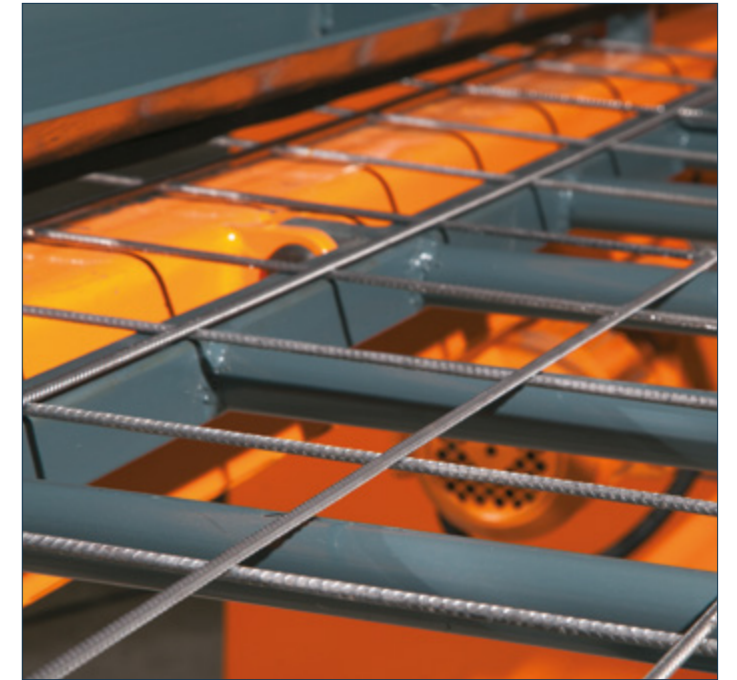
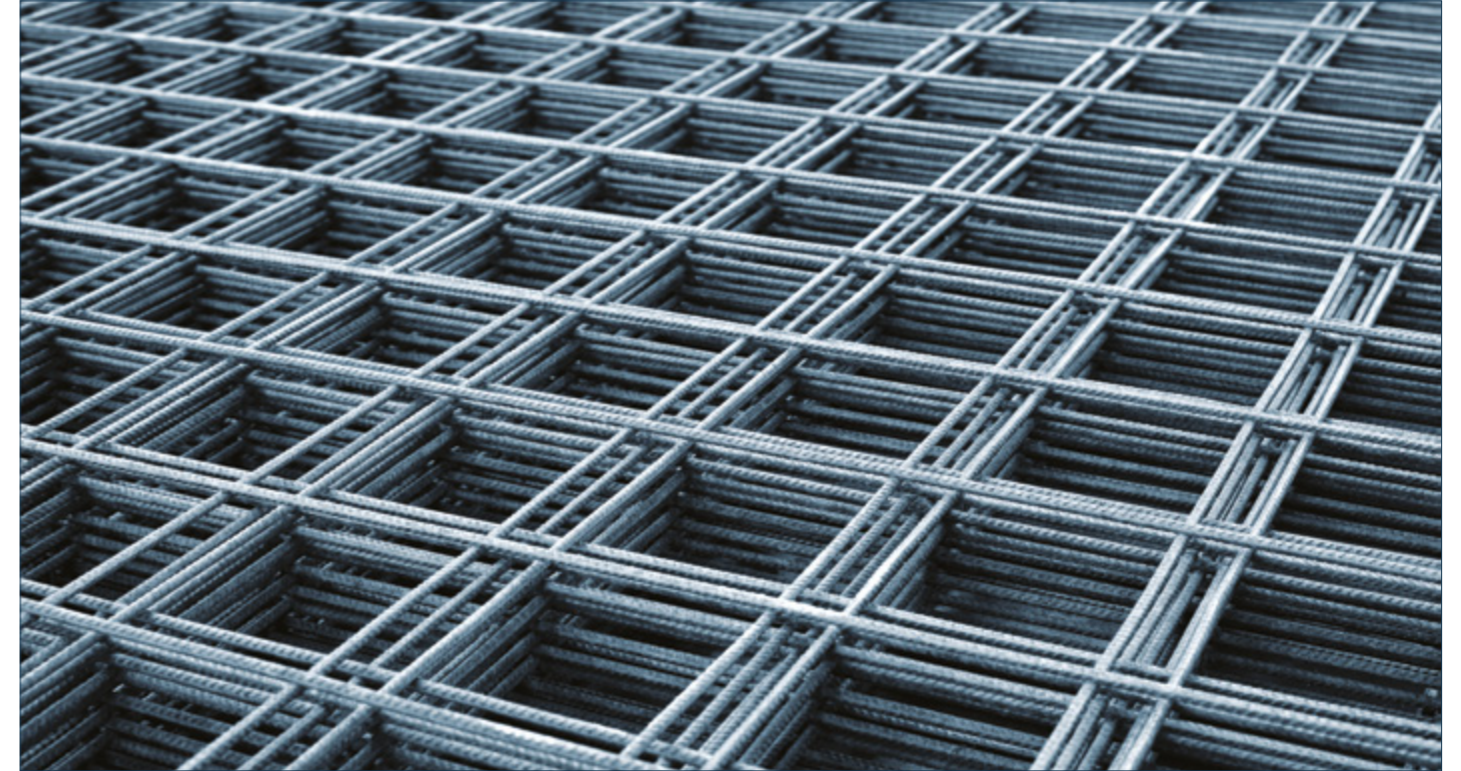
TEKNİK ÖZELLİKLER TECHNICAL SPECIFICATIONS						BÜKÜM KAPASİTELERİ BENDING CAPACITY		
Model	En - Boy - Yük. (cm) W - L - H (cm)	Motor Gücü (kW) Motor Power (kW)	Voltaj (V) Voltage (V)	Ağırlık (kg) Weight (kg)	Hid. Yağ. Kaps. (lt) Hydraulic Oil Tank Capacity (lt)	45 kg/mm <sup>2</sup> Demir Çapı (Ø) x Adet Diameter (Ø) x Piece	65 kg/mm <sup>2</sup> Demir Çapı (Ø) x Adet Diameter (Ø) x Piece	85 kg/mm <sup>2</sup> Demir Çapı (Ø) x Adet Diameter (Ø) x Piece
A 40	Ünite Unit 45/51,5/61	2,2	380	Ünite Unit 45	13	Ø 36 x 1	Ø 32 x 1	Ø 28 x 1
	Gövde Body 27/68/22			Gövde Body 84				

TECHNICAL SPECIFICATIONS										
Model	En - Boy - Yük. (cm) W - L - H (cm)	Motor Gücü Motor Power (Kesme - Cutting) (kW)	Motor Gücü Motor Power (Bükme - Bending) (kW)	Motor Devri Rotation (rpm)	Mot. Frekansı Frequency (Hz)	Voltaj Voltage (V)	Ağırlık Weight (kg)	Hid. Yağ. Kaps. Hydraulic Oil Tank Capacity (lt)		
MAX 40	110/98/110	2,2	3	1450	50	380	430	18		
BENDING CAPACITIES				CUTTING CAPACITIES						
45 kg/mm <sup>2</sup> Diameter (Ø) x Piece		65 kg/mm <sup>2</sup> Diameter (Ø) x Piece		85 kg/mm <sup>2</sup> Diameter (Ø) x Piece		45 kg/mm <sup>2</sup> Diameter (Ø) x Piece		65 kg/mm <sup>2</sup> Diameter (Ø) x Piece		85 kg/mm <sup>2</sup> Diameter (Ø) x Piece
Ø 36 x 1	Ø 24 x 2	Ø 32 x 1	Ø 20 x 2	Ø 28 x 1	Ø 18 x 2	Ø 30 x 1	Ø 28 x 1	Ø 26 x 1		



- Hidrolik
- 3 m
- 6 m opsiyonel
- Büküm dereceleri 45-90-135°
- Hydraulic
- 3 meter
- 6 m optional
- Bending angles 45-90-135°

**HB 12X3**



- Mekanik
- 3 m
- 7 sn de kesim
- Mechanical System
- 3 meter
- Cut in 7 seconds

**MH 8C**

Model	TEKNİK ÖZELLİKLER TECHNICAL SPECIFICATIONS					KESİM & BÜKÜM KAPASİTELERİ BENDING & CUTTING CAPACITIES		
	En - Boy - Yük. W - L - H (cm)	Motor Gücü (kW) Motor Power (kW)	Voltaj (V) Voltage (V)	Ağırlık (kg) Weight (kg)	Hid. Yağ. Kaps. Hydraulic Oil Tank Capacity (lt)	45 kg/mm <sup>2</sup> Demir Çapı (Ø) x Adet Diameter (Ø) x Piece	65 kg/mm <sup>2</sup> Demir Çapı (Ø) x Adet Diameter (Ø) x Piece	85 kg/mm <sup>2</sup> Demir Çapı (Ø) x Adet Diameter (Ø) x Piece
HB 12x3	98/340/109	5,5	380	710	36	Ø 12 x1	Ø 10 x 1	Ø 8 x 1
HB 12x6	100/640/109	7,5	380	1250	36	Ø 12 x1	Ø 10 x 1	Ø 8 x 1
MH 8C	97/405/132	1,1	380	530	-	Ø 8 x1	Ø 8 x 1	Ø 8 x 1



**RL 2000**

Teknik Özellikler	Motor Engine
Güç Power @3600 rpm	7.5
Silindir Hacmi Cylinder Volume (cm³)	349
Devir Rotation (rpm)	3600
Yakıt Tüketimi Fuel Consumption (lt/sa)	2.5
Akü Battery (V)	12
Yakıt Kapasitesi Fuel Capacity (lt)	4.3
Yağ Kapasitesi Oil Capacity (lt)	1.2
Tambur Çapı Drum Diameter (mm)	400
Tambur Geniřliđi Drum Width (mm)	600
Su Deposu Water Tank (lt)	25
Hidrolik Yağ Tankı Kapasitesi Hydraulic Oil Tank Capacity (lt)	50
Titreřim Frekansı Vibration Frequency (Hz)	60
Centrifugal Force (Front - Back) (kN)	20
Statik Lineer Yük Static Linear Load (kg/cm)	5.6
Sıkıřtırma Alanı Compaction Area (m²/sa)	2700
Yürütme Hızı Speed (Forward - Reverse) (km/sa)	4.5
Tırmanma Kabiliyeti Gradeability (%)	40
Makina Ađırlıđı Weight (kg)	605
Boyutlar (Kol Kapalı En x Boy x Yükseklik) (cm) Dimensions (Open Arm) (Width x Length x Height) (cm)	71 x 130 x 125
Boyutlar (Kol Açık En x Boy x Yükseklik) (cm) Dimensions (Closed Arm) (Width x Length x Height) (cm)	71x240x101



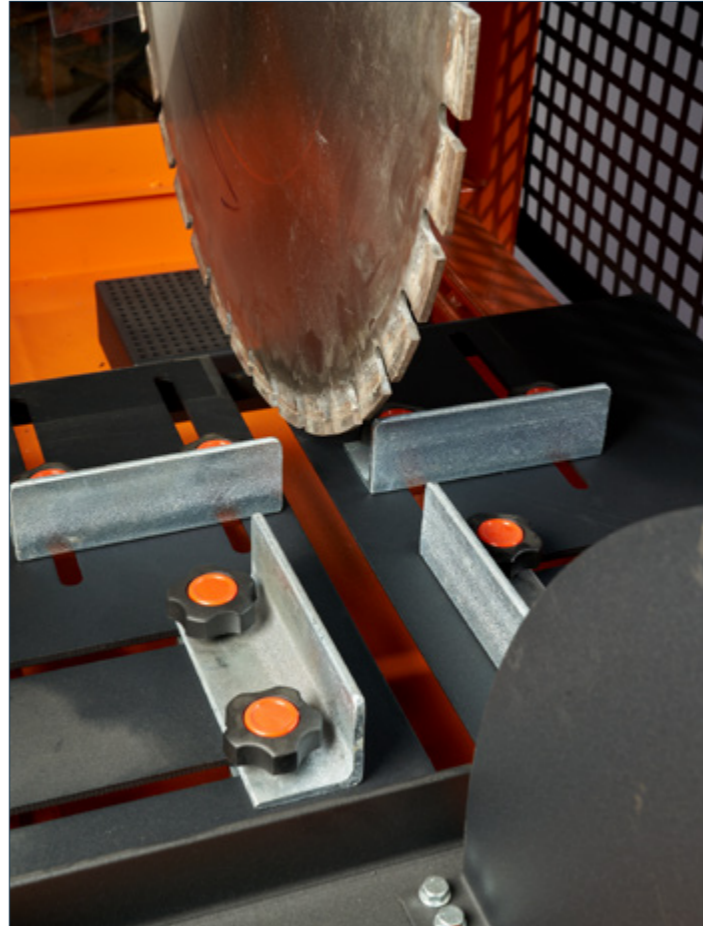
Motor seçenekleri için bilgi alınız.

Please ask for engine options.

**YTONG AND BRICK CUTTING MACHINE  
TUĞLA KESME MAKİNASI**



**BCZ 600**



TEKNİK ÖZELLİKLER TECHNICAL SPECIFICATIONS	BCZ 600
Boyutlar (En x Boy x Yükseklik) (cm) Dimensions (Width x Length x Height) (cm)	85 x 157 x 153
Testere Ebatı ("Z" Testere Diş Sayısı) (mm) Saw Size ("Z" Saw Slot Number) (mm)	Ø600 x 4.4 x 30 Z:30&72
Ağırlık Weight (kg)	180
Motor Gücü Engine Power (kW)	3
Motor Devri Engine Rotation (rpm)	1450
Çalışma Voltajı Voltage (V)	380/220
Motor Frekansı Frequency (Hz)	50

**POWER TROWEL  
PERDAH**



**MT 700P**



Teknik Özellikler	MT 700 P	MT 900 P
Perdah Çapı Power Diameter (mm)	700	900
Şase Çapı Blade Diameter (mm)	750	950
Bıçak Sayısı Blade Qty	4	4
Bıçak Eğilim Açısı Blade Pitch Angle	0-20°	0-20°
Ağırlık Weight (kg)	73	100
Tepsi Ağırlığı Plate Weight (kg)	10.5	16
Boyutlar (Kol Kapalı En x Boy x Yük.) (cm) Dimensions (Closed Arm) (W x L x H)	75 x 96 x 110	95 x 102 x 93
Boyutlar (Kol Açık En x Boy x Yük.) (cm) Dimensions (Open Arm) (W x L x H)	75 x 181 x 110	95 x 191 x 110
Motor Engine	Honda GX 200	Honda GX 200
Güç Power @3600 rpm	5.5 HP Benzin	7.5 HP Benzin
Silindir Hacmi Roller Volume (cm³)	196	196
Yakıt Tüketimi Fuel Consumption (lt/sa)	1.7	1.7
Yakıt Kapasitesi Fuel Capacity (lt)	3.6	3.6
Yağ Kapasitesi Oil Capacity (lt)	0.6	0.6

**COMPACTOR  
KOMPAKTÖR**



**MT 600K**



Teknik Özellikler	MT 600K	MT 700K
Boyutlar (Kol Kapalı En x Boy x Yük.) (cm) Dimensions (Closed Arm) (W x L x H)	86 x 42 x 79	99 x 50 x 85
Boyutlar (Kol Açık En x Boy x Yük.) (cm) Dimensions (Open Arm) (W x L x H)	146 x 42 x 75	157 x 50 x 95
Tabla (Genişlik x Uzunluk) Tray (Width x Length) (cm)	40 x 60	50 x 70
Tırmanma Kabiliyeti Gradeability (%)	30	30
Santrifüj Kuvveti Centrifugal Force (kN)	20	30
Titreşim Frekansı Vibration Frequency (Hz)	73	90
Ağırlık Weight (kg)	103	130
Motor Engine	Honda GX 200	Honda GX 270
Güç Power @3600 rpm	6.5 hp Benzin	9 hp Benzin
Silindir Hacmi Cylinder Volume (cm³)	196	270
Yakıt Tüketimi Fuel Consumption (l/sa) @3600rpm	1.7	2.5
Yakıt Tankı Fuel Capacity (lt)	3.6	6
Yağ Kapasitesi Oil Capacity (lt)	0.6	1.1



**GMS 25S**

**GMS 12**

Teknik Özellikler	GMS 12	GMS 25S
Motor Gücü Motor Power (kW)	2,2	3
Voltaj (V) / Frekansı (Hz) Voltage (V) / Frequency (Hz)	380 V - 50	380 V - 50
Sac Kalınlığı Thickness of Sheet (mm)	6-40	9-50
Kaynak Ağzı Derinliği Beveling Plate Width (mm)	12	20
Kaynak Boru Çapı Beveling Pipe Diameter (mm)	150-300 mm	150 mm
Kaynak Ağzı Açma Açısı Beveling Angle	0-30° (45° Opsiyonel Optional)	20°-45°
Ağırlık Weight (kg)	65,5 kg	425 kg
Boyut Dimensions (cm)	37 cm x 62 cm x 68 cm	90 cm x 76 cm x 131 cm



**1** ETRİYE KOLLARI MANUAL STIRRUP BENDER  
Kapasite Capacity: Ø 8 - Ø 16

**2** DEMİRCİ ANAHTARLARI CONSTRUCTION STEEL KEYS  
Kapasite Capacity: Ø 8 - Ø 36

**3** OTURAK MAKASLARI LOW STOOL SCISSORS  
Kapasite Capacity: Ø 8 - Ø 32

**4** EL MAKASLARI HAND SCISSORS  
Kapasite Capacity: Ø 8 - Ø 16

**5** AYARLI KÖŞEBENT  
ADJUSTABLE ANGLE BRACKET  
Kapasite Capacity: Ø 8 - Ø 26

**6** KALIP SÖKÜ TOPUKLU VE TAŞ  
MANİVELALARI  
LEVER



**GÖÇMAKSAN®**

Kontakt:  
kundeservice@watter.dk  
Tlf. +45 70261600  
www.watter.dk



S I N C E  
**1960**

**B45**